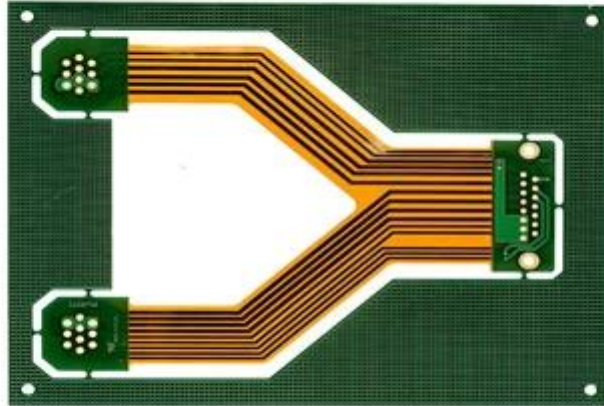


| | | | | | | |
|--|-------------|-------------|-------------|-------------|-------------|-------------|
| 0.15. 0.10. 0.15. 0.10. 0.15. 0.10. | 0.15. | 0.10. | 0.15. | 0.10. | 0.15. | 0.10. |
| 14: 1. 16: 1. 16: 1. 18: 1. 18: 1. 20: 1. | 14: 1. | 16: 1. | 16: 1. | 18: 1. | 18: 1. | 20: 1. |
| $n + c + n$ | $4 + C + 4$ | $5 + C + 5$ | $5 + C + 5$ | $6 + C + 6$ | $5 + C + 5$ | $6 + C + 6$ |
| $5 + 2 + 5$ | $5 + 2 + 5$ | $6 + 2 + 6$ | $5 + 2 + 5$ | $6 + 2 + 6$ | $5 + 2 + 5$ | $6 + 2 + 6$ |
| 50. | 40. | 40. | 30. | 40. | 30. | |
| 75. | 65. | 65. | 50. | 50. | 40. | |
| FR4 | - | - | - | - | - | - |
| PCB. | - | - | - | - | - | - |
| <p>hasl enigm osp</p> | | | | | | |



www.o-leading.com

HDI PCB 00000000 000000 000000 000000 000000 000000 000000 000000 000000 LED 000000 000000

000000







201726 201VZL430354 - Wiring, Printed - Component



ZPMV2.E490354
Wiring, Printed - Component

For enhanced search functionality, please visit UL's [eIC™ Family of Databases](#).
Click on a product designation for complete information.

[Page Bottom](#)

Wiring, Printed - Component

[See General Information for Wiring, Printed - Components](#)

O-LEADING SUPPLY CHAIN CO LIMITED 4190354

Fortune Building, Nanheng West Road
Room 1313
Huizhou, Guangdong 516211, CHINA

| Type | Cond Width | | | SS/ DS/ Diam | Area | Solder | | Flame | RoHS | C |
|--|---------------|---------------|-----------------------|--------------------|------------|--------|------|-------|------|----|
| | Min | Max | Min | | | Max | Temp | | | |
| Hub/Bayer (mass laminate) printed wiring boards. | | | | | | | | | | |
| D-LEADING-401 | | | | | | | | | | |
| | 0.2 (0.004) | 0.3 (0.012) | 34 (1.34) | D6 | 12.7 (0.5) | 260 | 10 | 130 | V-0 | - |
| D-LEADING-407 | | | | | | | | | | |
| | 0.08 (0.003) | 0.2 (0.008) | 17 (0.67) | D5 | 9.2 (0.4) | 260 | 10 | 170 | V-0 | NI |
| Hub/Bayer printed wiring boards. | | | | | | | | | | |
| D-LEADING-408 | | | | | | | | | | |
| | 0.125 (0.005) | 0.125 (0.005) | 12 (0.47) min:1.35 | D6 | 50.8 (2.0) | 260 | 20 | 130 | V-0 | NI |
| Single layer printed wiring boards. | | | | | | | | | | |
| D-LEADING-002 | | | | | | | | | | |
| | 0.76 (0.015) | 1.14 (0.045) | 34 (1.34) | S5 | 19.1 (0.8) | 260 | 10 | 105 | V-0 | NI |
| D-LEADING-003 | | | | | | | | | | |
| | 0.38 (0.015) | 1.14 (0.045) | 34 (1.34) | S5 | 19.1 (0.8) | 260 | 10 | 130 | V-0 | ▲ |
| D-LEADING-033 | | | | | | | | | | |
| | 0.15 (0.006) | 0.3 (0.012) | 34 (1.34) | S5 | 25.4 (1.0) | 260 | 10 | 120 | V-0 | NI |
| D-LEADING-205 | | | | | | | | | | |
| | 0.1 (0.004) | 0.3 (0.012) | 34 (1.34) | D6 | 69.6 (2.7) | 260 | 10 | 130 | V-0 | NI |
| D-LEADING-206 | | | | | | | | | | |
| | 0.15 (0.006) | 0.33 (0.013) | 17 (0.67) | D5 | 69.6 (2.7) | 260 | 10 | 130 | V-0 | NI |

* - CTI marking is optional and may be marked on the printed wiring board.

Marking: Company name or file number and type designation. May be followed by a suffix to denote factory identification or burning test classification.
Last updated on 2017-01-27

Questions? [Print this page](#) [Terms of Use](#) [Page Top](#)

[http://www.ul.com/ulcertification/201VZL430354/201VZL430354-ZPMV2.E490354/Wiring,Printed-Component](#) 10



Test Report

No. CANEC1805164701

Date: 03 Apr 2018

Page 2 of 8

Test Results:

Test Part Description:

Specimen No. **SGS Sample ID** **Description**
SN1 CAN18-051647.001 Green "PCB"

Remarks:

- (1) 1 mg/kg = 1 ppm = 0.0001%
- (2) MDL = Method Detection Limit
- (3) ND = Not Detected (< MDL)
- (4) "-" = Not Regulated

RoHS Directive (EU) 2015/863 amending Annex II to Directive 2011/65/EU

Test Method: With reference to IEC 62321-4:2014+A1:2017, IEC62321-5:2013, IEC62321-7-2:2017, IEC 62321-6:2015 and IEC62321-8:2017, analyzed by ICP-OES, UV-Vis and GC-MS.

| Test Item(s) | Limit | Unit | MDL | Det |
|----------------------------|-------|-------|-----|-----|
| Cadmium (Cd) | 100 | mg/kg | 2 | ND |
| Lead (Pb) | 1,000 | mg/kg | 2 | 9 |
| Mercury (Hg) | 1,000 | mg/kg | 2 | ND |
| Hexavalent Chromium (CrVI) | 1,000 | mg/kg | 8 | ND |
| Sum of PBBs | 1,000 | mg/kg | - | ND |
| Monobromobiphenyl | - | mg/kg | 5 | ND |
| Dibromobiphenyl | - | mg/kg | 5 | ND |
| Tribromobiphenyl | - | mg/kg | 5 | ND |
| Tetrabromobiphenyl | - | mg/kg | 5 | ND |
| Pentabromobiphenyl | - | mg/kg | 5 | ND |
| Hexabromobiphenyl | - | mg/kg | 5 | ND |
| Heptabromobiphenyl | - | mg/kg | 5 | ND |
| Octabromobiphenyl | - | mg/kg | 5 | ND |
| Nonabromobiphenyl | - | mg/kg | 5 | ND |
| Decabromobiphenyl | - | mg/kg | 5 | ND |
| Sum of PBDEs | 1,000 | mg/kg | - | ND |
| Monobromodiphenyl ether | - | mg/kg | 5 | ND |
| Dibromodiphenyl ether | - | mg/kg | 5 | ND |
| Tribromodiphenyl ether | - | mg/kg | 5 | ND |
| Tetrabromodiphenyl ether | - | mg/kg | 5 | ND |
| Pentabromodiphenyl ether | - | mg/kg | 5 | ND |



SGS is pleased to announce the launch of its new 'Green' product line. This line is designed to meet the needs of customers who are looking for products that are both high quality and environmentally friendly. The 'Green' products are made from recycled materials and are free of harmful substances. They are also designed to be energy efficient and to have a long life span. This is a commitment to the environment and to the future. For more information, please visit [www.sgs.com](#).

Member of the SGS Group (SGS SA)

