

## PCB P/N

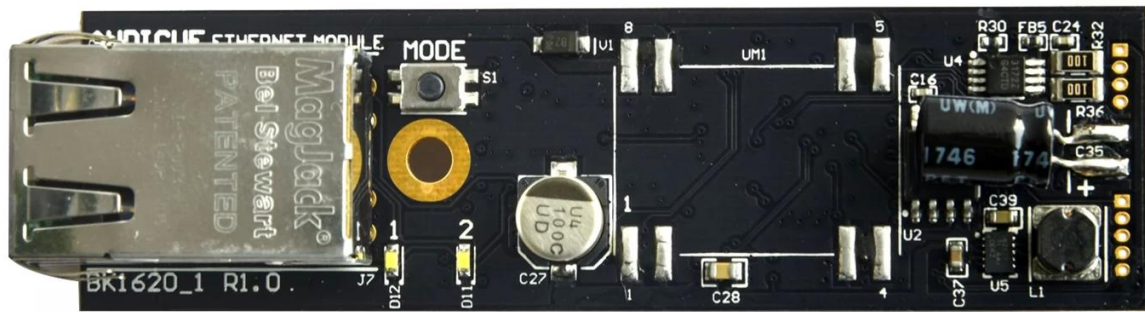
PCB P/N: T002\_EthModule  
 MCPCB. 96-48 8-4 24

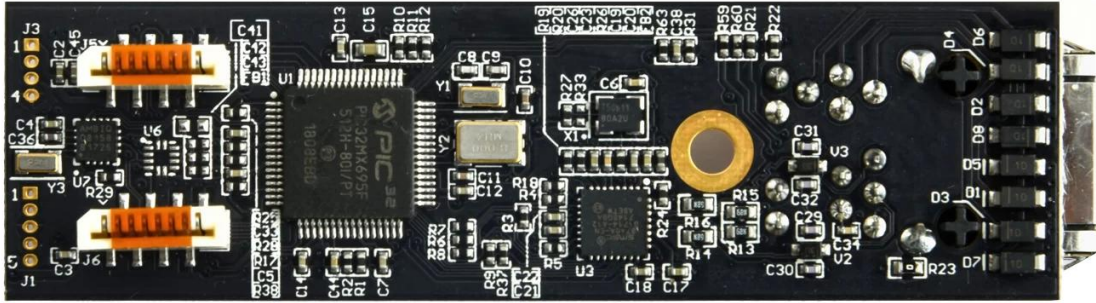
025. 020

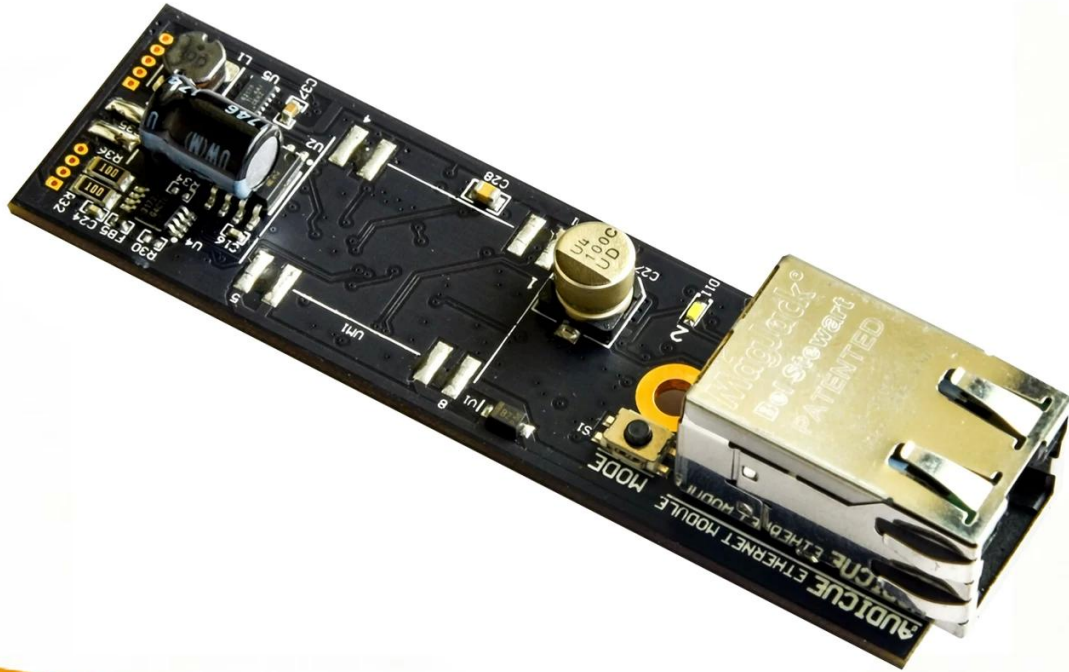
25

## PCB P/N

PCB P / N	T002_EthModule
	4L
	FR-4 TG135
thk	1.6MM
	1/1 / 1 / 1OZ
	0.3MM
(pc)	218
/	5 / 5mil
. Y / N ( )	Y / 100 +/- 10 Ω
:	0.05-0.10UM
	Dim X (mm): 80 □ Dim Y (mm): 22.6
Panelisation	Dim X (mm): 90□ Dim Y (mm): 121□ No of UPS: 5
:	N
/	CNC + V-CUT







[www.o-leading.com](http://www.o-leading.com)









**QUALITY MANAGEMENT SYSTEM CERTIFICATE**  
 Certificate No: 16118Q10347R05

**We hereby certify that**  
**O-LEADING SUPPLY CHAIN(HK) CO.,LIMITED**  
 Credit No: 61691591-000-07-17-2  
 Registration Add: ROOM 603D 6/F HANG PONT COMMERCIAL BUILDING,31 TONKIN ST,CHEUNG SHA WAN,KL, HK  
 Business Add: 1313 Floor 13 Fortune Building, Danstui Town Huiyang District, Huizhou, Guangdong, China

Has implemented and maintains a **Quality Management System**  
 Which fulfills the requirements of the following standards  
 GB/T19001-2016 idt ISO9001:2015

**Scope of certification**  
 Sales of printed circuit boards

Initial Issuance period: February 27, 2018  
 This certificate is valid during: February 27, 2018 -- February 26, 2021  
 This certificate is invalid without CICC qualified label in the following period

First supervision and audit	Qualified mark	Second supervision and audit	Qualified mark
-----------------------------	----------------	------------------------------	----------------

The certification registration scope shall include those products/services scopes which fall to be covered by the relevant effective administrative permission and qualification permission required by the state. The effectiveness of this certificate shall be evaluated by annual surveillance audit of CICC. The certificate shall be valid when used together with the surveillance audit conclusion. The related information of this certification can be searched at the public website of company www.cicc.com.cn.

201726 201VZL430354 - Wiring, Printed - Component

**UL ONLINE CERTIFICATIONS DIRECTORY**

**ZPMV2.E490354**  
**Wiring, Printed - Component**

For enhanced search functionality, please visit [UL's QPL Family of Databases](#).  
 Click on a product designation for complete information.  
[Page Bottom](#)

**Wiring, Printed - Component**

See General Information for Wiring, Printed - Components

**O-LEADING SUPPLY CHAIN CO LIMITED** 4190354  
 Fortune Building, Nanheng West Road  
 Room 1313  
 Huizhou, Guangdong 516211, CHINA

Type	Cond Width			SS/ DS/	Area Diam	Solder		Flame	RoHS	C	
	Min	Max	Min			Dper	Temp				
Min	Edge	Thk	DS/	Di	mm(in)	C	sec	C	Class	DSR	I
max(in)	mm(in)	mic(mil)	DSO	mm(in)	C	sec	C	Class	DSR	I	
<b>Multi-layer (mass laminate) printed wiring boards.</b>											
<b>O-LEADING-401</b>											
	0.2 (0.004)	0.3 (0.012)	34 (1.34)	D6	12.7 (0.5)	260	10	130	V-0	-	-
<b>O-LEADING-407</b>											
	0.08 (0.003)	0.2 (0.008)	17 (0.67)	D5	9.2 (0.4)	260	10	170	V-0	NI	-
<b>Multi-layer printed wiring boards.</b>											
<b>O-LEADING-408</b>											
	0.125 (0.005)	0.125 (0.005)	12 (0.47) mi-135	D6	50.8 (2.0)	260	20	130	V-0	NI	*
<b>Single layer printed wiring boards.</b>											
<b>O-LEADING-002</b>											
	0.76 (0.015)	1.14 (0.045)	34 (1.34)	S5	19.1 (0.8)	260	10	105	V-0	NI	-
<b>O-LEADING-003</b>											
	0.38 (0.015)	1.14 (0.045)	34 (1.34)	S5	19.1 (0.8)	260	10	130	V-0	▲	-
<b>O-LEADING-033</b>											
	0.15 (0.006)	0.3 (0.012)	34 (1.34)	S5	25.4 (1.0)	260	10	120	V-0	NI	-
<b>O-LEADING-205</b>											
	0.1 (0.004)	0.3 (0.012)	34 (1.34)	D6	69.6 (2.7)	260	10	130	V-0	NI	-
<b>O-LEADING-206</b>											
	0.15 (0.006)	0.33 (0.013)	17 (0.67)	D5	69.6 (2.7)	260	10	130	V-0	NI	-

\* - CTI marking is optional and may be marked on the printed wiring board.

Marking: Company name or file number and type designation. May be followed by a suffix to denote factory identification or burning test classification.  
 Last updated on 2017-01-27

Questions? [Print this page](#) [Terms of Use](#) [Page Top](#)

[http://www.ul.com/qpl/qpl.html?ulcert=607619&ulcerttype=ZPMV2.E490354&ulcertdesc=Wiring,Printed-Component&ulcertid=10](#)

**SGS**

**Test Report** No. CANEC1805164701 Date: 03 Apr 2018 Page 2 of 8

Test Results:

Test Part Description:

Specimen No. **SGS Sample ID** **Description**  
 SN1 CAN18-051647.001 Green "PCB"

Remarks:

(1) 1 mg/kg = 1 ppm = 0.0001%  
 (2) MDL = Method Detection Limit  
 (3) ND = Not Detected (< MDL)  
 (4) "-" = Not Regulated

**RoHS Directive (EU) 2015/863 amending Annex II to Directive 2011/65/EU**

Test Method: With reference to IEC 62321-4:2014+A1:2017, IEC 62321-5:2013, IEC 62321-7-2:2017, IEC 62321-6:2015 and IEC 62321-8:2017, analyzed by ICP-OES, UV-Vis and GC-MS.

Test Item(s)	Limit	Unit	MDL	Det
Cadmium (Cd)	100	mg/kg	2	ND
Lead (Pb)	1,000	mg/kg	2	9
Mercury (Hg)	1,000	mg/kg	2	ND
Hexavalent Chromium (CrVI)	1,000	mg/kg	8	ND
Sum of PBBs	1,000	mg/kg	-	ND
Monobromobiphenyl	-	mg/kg	5	ND
Dibromobiphenyl	-	mg/kg	5	ND
Tribromobiphenyl	-	mg/kg	5	ND
Tetrabromobiphenyl	-	mg/kg	5	ND
Pentabromobiphenyl	-	mg/kg	5	ND
Hexabromobiphenyl	-	mg/kg	5	ND
Heptabromobiphenyl	-	mg/kg	5	ND
Octabromobiphenyl	-	mg/kg	5	ND
Nonabromobiphenyl	-	mg/kg	5	ND
Decabromobiphenyl	-	mg/kg	5	ND
Sum of PBDEs	1,000	mg/kg	-	ND
Monobromodiphenyl ether	-	mg/kg	5	ND
Dibromodiphenyl ether	-	mg/kg	5	ND
Tribromodiphenyl ether	-	mg/kg	5	ND
Tetrabromodiphenyl ether	-	mg/kg	5	ND
Pentabromodiphenyl ether	-	mg/kg	5	ND

Member of the SGS Group (SGS SA)

Shipping service

Shipping service	16 days
Shipping service	7-12days

(Shipping service)



Shipping service

1. Shipping service O-Leading

Shipping service O-Leading

1. Shipping service O-Leading
2. Shipping service O-Leading
3. Shipping service O-Leading
4. Shipping service O-Leading
5. Shipping service O-Leading

2. Shipping service O-Leading

Shipping service O-Leading



3. what are the different types of PCB materials?

FR4 is the most common PCB material. Other materials include TG, Arlon, Teflon, PI, etc.

4. What are the different types of PCB manufacturing processes?

Gerber 274-X, Cam350, CAD, Protel 99se, PADS, DXP, Eagle.

5. What are the different types of PCB assembly processes?

PTH, AOI, PTH, E/T, etc.