

PCB PROJEKTİ ÖZETİ

PCB projeniz için aşağıdaki bilgiler sağlanmıştır. Proje için kullanılacak malzeme ve teknik özellikler aşağıda belirtilmiştir. **MCPCB** (S / S) (1000). Proje için kullanılacak malzeme 96-48 mm boyutlarında 8-4 mm kalınlığında 24 adet olacaktır.)

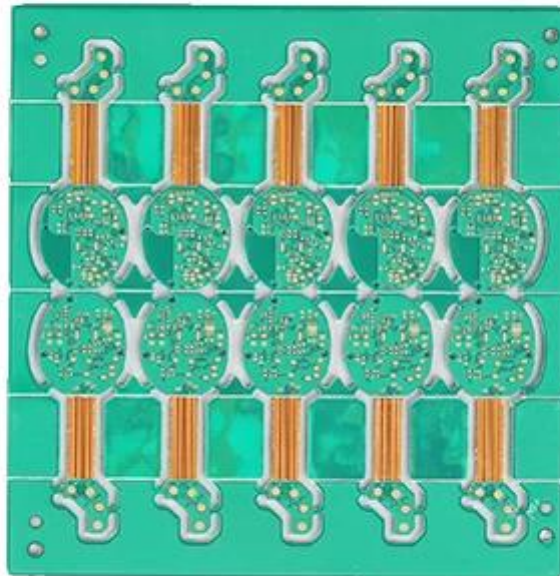
Proje no: 025. Proje için kullanılacak malzeme miktarı aşağıda belirtilmiştir. Proje için kullanılacak malzeme miktarı .. Proje no: 020 mm

Proje için kullanılacak malzeme miktarı 25 mm boyutlarında olacaktır. Proje için kullanılacak malzeme miktarı 25 mm boyutlarında olacaktır.

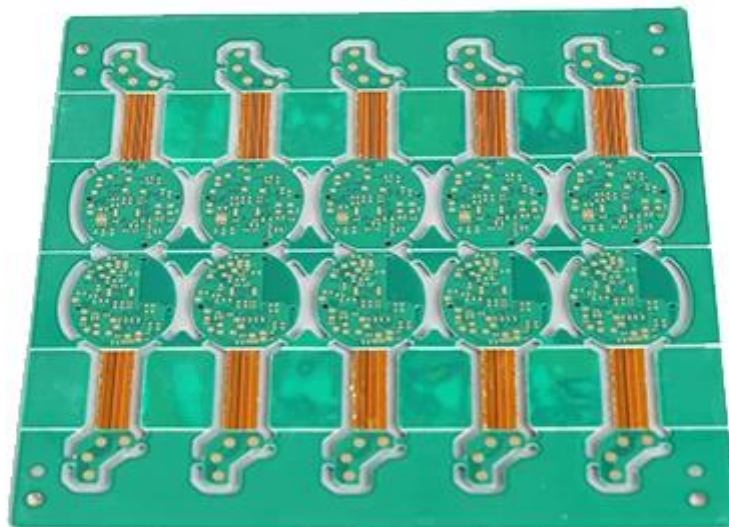
[Proje için kullanılacak malzeme miktarı](#) : Proje için kullanılacak malzeme miktarı .. Proje için kullanılacak malzeme miktarı

TEKNİK ÖZELLİKLER

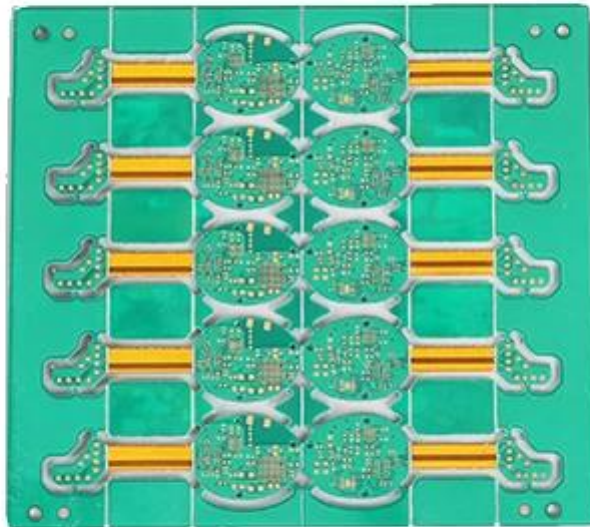
PCB P / N	6L (4 mm + 2 mm)
Malzeme	FR-4 TG150
mm thk	0.80mm
Copper thk	1 / H / H / H / H / 1oz
mm mm mm	0.20mm
mm mm mm) mm mm)	187
mm / mm	4 / 4mil
mm mm mm. Y / N (mm)	Y
mm mm mm	ENIG Au: 0.05-0.12UM
mm mm mm mm mm	mm / mm / mm
S mm mm mm mm	mm mm 29.8 : (mm) mm mm Y (11.2 : (mm)
Panelisatio	mm X (mm): 73.6 mm Dim Y (mm): 74 mm No of UPS: 10
mm mm mm : mm	N
mm mm / mm mm	CNC



www.o-leading.com



www.o-leading.com



www.o-leading.com









201726 201VZL430354 - Wiring, Printed - Component



ZPMV2.E490354
Wiring, Printed - Component

For enhanced search functionality, please visit UL's [ULi Family of Databases](#).
Click on a product designation for complete information.

Page Bottom

Wiring, Printed - Component

See General Information for Wiring, Printed - Components

O-LEADING SUPPLY CHAIN CO LIMITED

Fortune Building, Nanheng West Road
Room 1313
Huizhou, Guangdong 516211, CHINA

E490354

	Cond Width			SS/ DS/	Area Diam	Solder		Temp		Flame	RoHS	C
	Min	Max	Min			Max	Class	DSR				
Typ	max(in)	mm(in)	mic(mil)	DSO	mm(in)	C	sec	C	Class	DSR	I	
Multi-layer (mass laminate) printed wiring boards.												
O-LEADING-401												
	0.2 (0.004)	0.3 (0.012)	34 (1.34)	D6	12.7 (0.5)	260	10	130	V-0	-	-	
O-LEADING-407												
	0.08 (0.003)	0.2 (0.008)	17 (0.67)	D5	9.2 (0.4)	260	10	170	V-0	NI	-	
Multi-layer printed wiring boards.												
O-LEADING-408												
	0.125 (0.005)	0.125 (0.005)	12 (0.47) min:1.25	D6	50.8 (2.0)	260	20	130	V-0	NI	*	
Single layer printed wiring boards.												
O-LEADING-002												
	0.76 (0.015)	1.14 (0.045)	34 (1.34)	S5	19.1 (0.8)	260	10	105	V-0	NI	-	
O-LEADING-003												
	0.38 (0.015)	1.14 (0.045)	34 (1.34)	S5	19.1 (0.8)	260	10	130	V-0	▲	-	
O-LEADING-033												
	0.15 (0.006)	0.3 (0.012)	34 (1.34)	S5	25.4 (1.0)	260	10	120	V-0	NI	-	
O-LEADING-205												
	0.1 (0.004)	0.3 (0.012)	34 (1.34)	D6	69.6 (2.7)	260	10	130	V-0	NI	-	
O-LEADING-206												
	0.15 (0.006)	0.33 (0.013)	17 (0.67)	D5	69.6 (2.7)	260	10	130	V-0	NI	-	

* - CTI marking is optional and may be marked on the printed wiring board.

Marking: Company name or file number and type designation. May be followed by a suffix to denote factory identification or burning test classification.
Last updated on 2017-01-27

Questions? [Print this page](#) [Terms of Use](#) [Page Top](#)

http://www.ul.com/ulcertification/UL60718RMS/ewg/ulcert/ZPMV2.E490354/Component/Wiring,Printed-Component/10



Test Report

No. CANEC1805164701

Date: 03 Apr 2018

Page 2 of 8

Test Results:

Test Part Description:

Specimen No. **SGS Sample ID** **Description**
SN1 CAN18-051647.001 Green "PCB"

Remarks:

- (1) 1 mg/kg = 1 ppm = 0.0001%
- (2) MDL = Method Detection Limit
- (3) ND = Not Detected (< MDL)
- (4) "-" = Not Regulated

RoHS Directive (EU) 2015/863 amending Annex II to Directive 2011/65/EU

Test Method: With reference to IEC 62321-4:2014+A1:2017, IEC62321-5:2013, IEC62321-7-2:2017, IEC 62321-6:2015 and IEC62321-8:2017, analyzed by ICP-OES, UV-Vis and GC-MS.

Test Item(s)	Limit	Unit	MDL	Det
Cadmium (Cd)	100	mg/kg	2	ND
Lead (Pb)	1,000	mg/kg	2	9
Mercury (Hg)	1,000	mg/kg	2	ND
Hexavalent Chromium (CrVI)	1,000	mg/kg	8	ND
Sum of PBBs	1,000	mg/kg	-	ND
Monobromobiphenyl	-	mg/kg	5	ND
Dibromobiphenyl	-	mg/kg	5	ND
Tribromobiphenyl	-	mg/kg	5	ND
Tetrabromobiphenyl	-	mg/kg	5	ND
Pentabromobiphenyl	-	mg/kg	5	ND
Hexabromobiphenyl	-	mg/kg	5	ND
Heptabromobiphenyl	-	mg/kg	5	ND
Octabromobiphenyl	-	mg/kg	5	ND
Nonabromobiphenyl	-	mg/kg	5	ND
Decabromobiphenyl	-	mg/kg	5	ND
Sum of PBDEs	1,000	mg/kg	-	ND
Monobromodiphenyl ether	-	mg/kg	5	ND
Dibromodiphenyl ether	-	mg/kg	5	ND
Tribromodiphenyl ether	-	mg/kg	5	ND
Tetrabromodiphenyl ether	-	mg/kg	5	ND
Pentabromodiphenyl ether	-	mg/kg	5	ND



SGS is pleased to announce the launch of its new online platform for the provision of test results. The platform is designed to provide a secure and efficient way for clients to access their test results. The platform is available in English, French, German, Italian, Japanese, Korean, Spanish, and Chinese. For more information, please contact your local SGS office or visit www.sgslab.com.

Member of the SGS Group (SGL SA)

Shipping service

Shipping service	16 (EMS, CHINA POST, Hongkong Post, DHL, FedEx Express) 9 (7-12days)
Shipping service	7-12days



Shipping service

1. Shipping service O-Leading

. Shipping service O-Leading (EMS, CHINA POST, Hongkong Post, DHL, FedEx Express) 9 (7-12days) .1 ISO 9001: 2008.

2. Shipping service O-Leading

. Shipping service O-Leading (EMS, CHINA POST, Hongkong Post, DHL, FedEx Express) 9 (7-12days) .3 AOI (Automated Optical Inspection) .4 .5

2. Shipping service O-Leading

. Shipping service O-Leading (EMS, CHINA POST, Hongkong Post, DHL, FedEx Express) 9 (7-12days) .31 .4 .5

3. what shipping service O-Leading

FR4 shipping service TG shipping service Arlon Telfon / shipping service

000000 PI 0 000.

4. 0000000 00000 00000000 000000 00000000 00000000 00000000 00 00
0000000 0000000 0000000 00 Gerber 274-X. 0000000 000000 00000 0 0000 0000 000000000 Cam350 0 CAD 0
Protel 99se 0 PADS 0 DXP 0 Eagle.

5. 000000000 000000 0000000 000000 00000000 00000000 00000000 000000 00 00
000000 0000 ← 0000 000000 00000 ← 00000000 000000 ← AOI 0000 000000 0000000 00000 ← 0000000 000000 ← 0000000
000000 ← 000000 ← PTH ← 00000 ← 000000 00000 ← 0000000 0000 ← 0000 000000 ← 0000 0000000 00000 ← 0000000000 0000
00000000 ← 000000 000000 ← 00000 ← E / T ← 00000000 000000.