

## Welcome to O-leading

We are professional PCB manufacturer with more than ten years experiences . Products range-single, double side ,multi-layer PCB ,flexible PCB and MCPCB.We can provide fast prototype service - S/S in 24hrs , 4-8layers in 48-96 working hrs production time. ([Thick copper pcb Manufacturer](#))

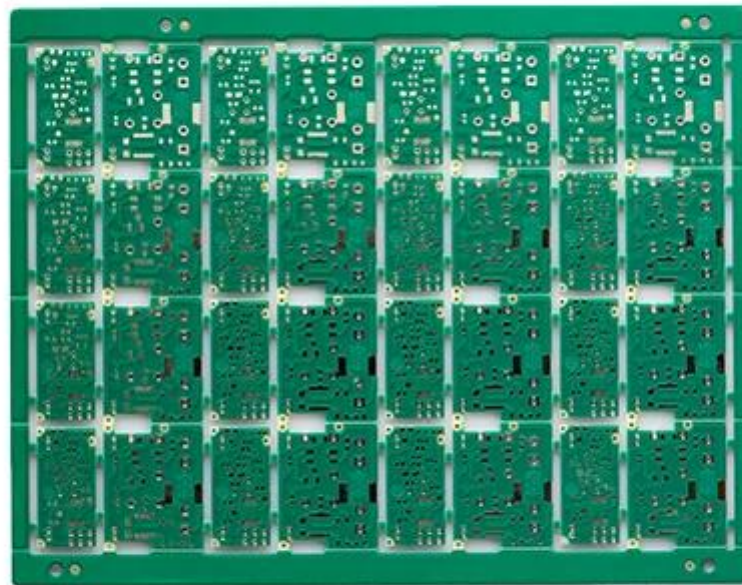
COPPER PLATE HOLES MINIMUM .025 AVG, .020 MIN.. HOLES MAY NOT BE PLUGGED

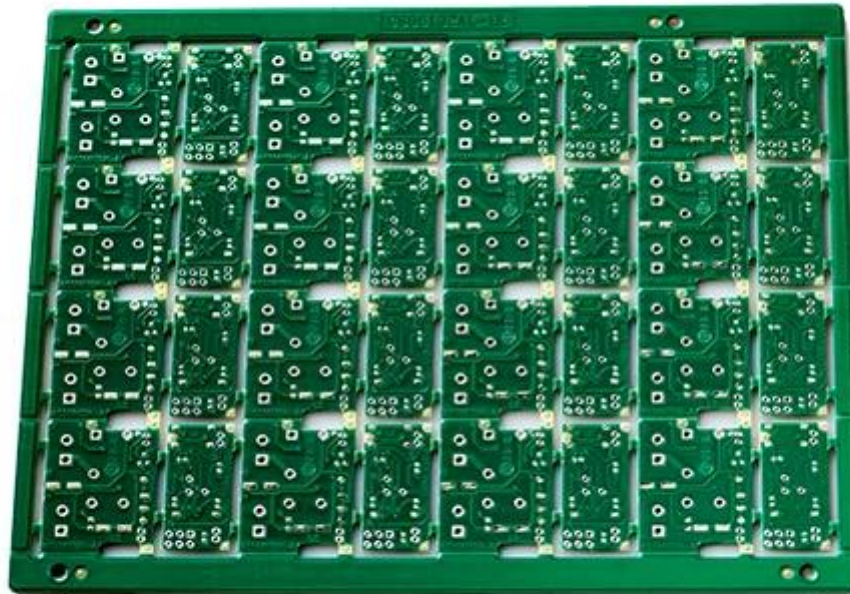
Pack with colorless transparent bubble film ,25 PCS/ bag, put desiccant in flank, put humidity indicator card on top side

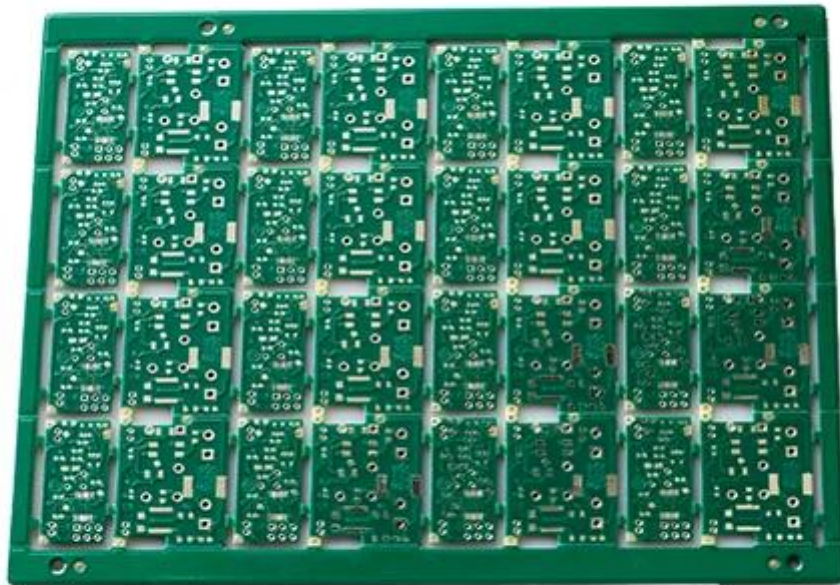
PLEASE CLICK THESE FOR MORE INFORMATION: [Thick copper pcb wholesales china](#)

## Product Description

PCB P/N	heavy copper pcb with 3/3oz
Layer Count	2L
Material	FR-4 TG130
Board thk	1.00mm
copper thk	3/3oz
Smallest hole size	0.50mm
No. of holes (pcs)	106
line w/s	10/10mil
Impedance control. Y / N (Tol %)	N
Surface Finishing	LF-HASL
Solder Mask Silkscreen	Green/ N/A
Single board size	Dim X (mm): 44.5; Dim Y (mm): 34
Panelisation	198;Dim Y (mm):156;No Of UPS:16
Special:peelable mask	N
Routing/Punching	CNC







[www.o-leading.com](http://www.o-leading.com)

[pcb board Printed company china](#)

Our Team







Certifications





2017/26 2016VZL430354 - Wiring, Printed - Component

**ONLINE CERTIFICATIONS DIRECTORY**

**ZPMV2.E490354**  
Wiring, Printed - Component

For enhanced search functionality, please visit UL's [iQ™ Family of Databases](#).  
Click on a product designation for complete information.

[Page Bottom](#)

**Wiring, Printed - Component**

[See General Information for Wiring, Printed - Components](#)

**O-LEADING SUPPLY CHAIN CO LIMITED**  
Fortune Building, Nanheng West Road  
Room 1313  
Huizhou, Guangdong 516211, CHINA

E490354

	Cond Width		Cond	SS/	Area	Solder	Oper	Temp	Flame	UL796	T
	Min	Max									
Typ	mm(In)	mm(In)	mic(mil)	DSO	mm(In)	C	sec	C	Class	DSR	I
<b>HullBayer (mass laminate) printed wiring boards.</b>											
<b>O-LEADING-401</b>											
	0.2 (0.004)	0.3 (0.012)	34 (1.34)	D6	12.7 (0.5)	260	10	230	V-0	-	-
<b>O-LEADING-407</b>											
	0.08 (0.003)	0.2 (0.008)	17 (0.67)	D5	9.7 (0.4)	260	10	170	V-0	AB	-
<b>HullBayer printed wiring boards.</b>											
<b>O-LEADING-408</b>											
	0.125 (0.005)	0.125 (0.005)	12 (0.47)	D6	50.8 (2.0)	260	20	130	V-0	AB	-
<b>Single layer printed wiring boards.</b>											
<b>O-LEADING-002</b>											
	0.76 (0.015)	1.14 (0.045)	34 (1.34)	D5	19.1 (0.8)	260	10	105	V-0	AB	-
<b>O-LEADING-003</b>											
	0.38 (0.015)	1.14 (0.045)	34 (1.34)	D5	19.1 (0.8)	260	10	130	V-0	AB	-
<b>O-LEADING-033</b>											
	0.15 (0.006)	0.3 (0.012)	34 (1.34)	D5	25.4 (1.0)	260	10	120	V-0	AB	-
<b>O-LEADING-205</b>											
	0.2 (0.004)	0.3 (0.012)	34 (1.34)	D6	69.8 (2.7)	260	10	130	V-0	AB	-
<b>O-LEADING-206</b>											
	0.15 (0.006)	0.33 (0.013)	17 (0.67)	D5	69.8 (2.7)	260	10	130	V-0	AB	-

\* - CTI marking is optional and may be marked on the printed wiring board.

Making: Company name or file number and type designation. May be followed by a suffix to denote factory identification or burning test designation.  
Last updated on 2017-01-27

Questions? [Print this page](#) [Terms of Use](#) [Page Top](#)

[Implications of using iQ™ for product identification: ZPMV2.E490354 - Wiring, Printed - Component](#)



**Test Report** No. CAVECE1805164701 Date: 03 Apr 2018 Page 2 of 8

**Test Results:**

**Test Part Description:**

Specimen No.	SGS Sample ID	Description
SN1	CAN18-051647.001	Green "PCB"

**Remarks:**

(1) 1 mg/kg = 1 ppm = 0.0001%

(2) MDL = Method Detection Limit

(3) ND = Not Detected (< MDL)

(4) "-" = Not Regulated

**RoHS Directive (EU) 2015/863 amending Annex II to Directive 2011/65/EU**

**Test Method:** With reference to IEC 62321-4:2013+A1:2017, IEC 62321-5:2013, IEC 62321-7-2:2017, IEC 62321-6:2015 and IEC 62321-8:2017, analyzed by ICP-OES, UV-Vis and GC-MS.

Test Item(s)	Limit	Unit	MDL	Det
Cadmium (Cd)	100	mg/kg	2	ND
Lead (Pb)	1,000	mg/kg	2	9
Mercury (Hg)	1,000	mg/kg	2	ND
Hexavalent Chromium (CrVI)	1,000	mg/kg	8	ND
Sum of PBBs	1,000	mg/kg	-	ND
Monobromodiphenyl ether	-	mg/kg	5	ND
Dibromodiphenyl ether	-	mg/kg	5	ND
Tribromodiphenyl ether	-	mg/kg	5	ND
Tetrabromodiphenyl ether	-	mg/kg	5	ND
Pentabromodiphenyl ether	-	mg/kg	5	ND
Hexabromodiphenyl ether	-	mg/kg	5	ND
Heptabromodiphenyl ether	-	mg/kg	5	ND
Octabromodiphenyl ether	-	mg/kg	5	ND
Nonabromodiphenyl ether	-	mg/kg	5	ND
Decabromodiphenyl ether	-	mg/kg	5	ND
Sum of PBDEs	1,000	mg/kg	-	ND
Monobromodiphenyl ether	-	mg/kg	5	ND
Dibromodiphenyl ether	-	mg/kg	5	ND
Tribromodiphenyl ether	-	mg/kg	5	ND
Tetrabromodiphenyl ether	-	mg/kg	5	ND
Pentabromodiphenyl ether	-	mg/kg	5	ND

SGS Testing Laboratory (Shanghai) Co., Ltd. is a member of the SGS Group. The SGS Group is a leading provider of inspection, testing, and certification services. The SGS Group is committed to providing high-quality services to its customers. The SGS Group is a member of the ISO 9001:2015 standard.

SGS Testing Laboratory (Shanghai) Co., Ltd. is a member of the SGS Group. The SGS Group is a leading provider of inspection, testing, and certification services. The SGS Group is committed to providing high-quality services to its customers. The SGS Group is a member of the ISO 9001:2015 standard.

## Packaging & Delivery

Packaging Details	16 years professional OEM pcb board manufacturer
Delivery Detail	7-12days



## FAQ

1. How do O-Leading ensure quality?

Our high quality standard is achieved with the following.

- 1.The process is strictly controlled under ISO 9001:2008 standards.
- 2.Extensive use of software in managing the production process
- 3.State-of-art testing equipments and tools. E.g. Flying Probe, X-ray Inspection, AOI (Automated Optical Inspector) and ICT (in-circuit testing).
- 4.Dedicated quality assurance team with failure case analysis process
- 5.Continuous staff training and education

2. How do O-Leading keep your price competitive?

Over the last decade, prices of many raw materials (e.g. copper, chemicals) had doubled, tripled or quadrupled; Chinese currency RMB had appreciated 31% over US dollar; And our labor cost also increased significantly. However, O-Leading have kept our pricing steady. This owns entirely to our innovations in reducing cost, avoiding wastes and improving efficiency. Our prices are very competitive in the industry at the same quality level.

We believe in a win-win partnership with our customers. Our partnership will be mutually beneficial if we can provide you an edge on cost and quality.



3. What kinds of boards can O-Leading process?

Common FR4, high-TG and halogen-free boards, Rogers, Arlon, Telfon, aluminum/copper-based boards, PI, etc.

4. What data are needed for PCB production?

It is best to provide data in Gerber 274-X format. In addition, Cam350, CAD, Protel 99se, PADS, DXP and Eagle can also be processed.

5. What's the typical process flow for multi-layer PCB?

Material cutting → Inner dry film → inner etching → Inner AOI → Multi-bond → Layer stack up Pressing → Drilling → PTH → Panel Plating → Outer Dry Film → Pattern Plating → Outer etching → Outer AOI → Solder Mask → Component Mark → Surface finish → Routing → E/T → Visual Inspection.