

## Product Description

FINISH: THIS BOARD SHALL BE IMMERSION GOLD PLATED ACCORDING TO IPC-6012.  
THICKNESS SHALL BE .050uM OVER 3-6uM NICKEL.

COPPER PLATE HOLES MINIMUM .025 AVG, .020 MIN.. HOLES MAY NOT BE PLUGGED

Pack with colorless transparent bubble film ,25 PCS/ bag, put desiccant in flank, put humidity indicator card on top side

Layer structure

L1-----HOZ

- PP 7mil -

- -

L2-----1OZ

- CORE 9.05mil -

L3-----1OZ

- -

- PP 7mil -

L4-----HOZ

Layer Definitions:

\*.GCMT - Top Conformal Coating Mask

\*.GTP - Top Solder Paste

\*.GTO - Top Silkscreen

\*.GTS - Top Soldermask

\*.GTL - Top Layer

-----  
\*.G2L - Inner Signal Layer 1

=====

\*.G3L - Inner Signal Layer 2

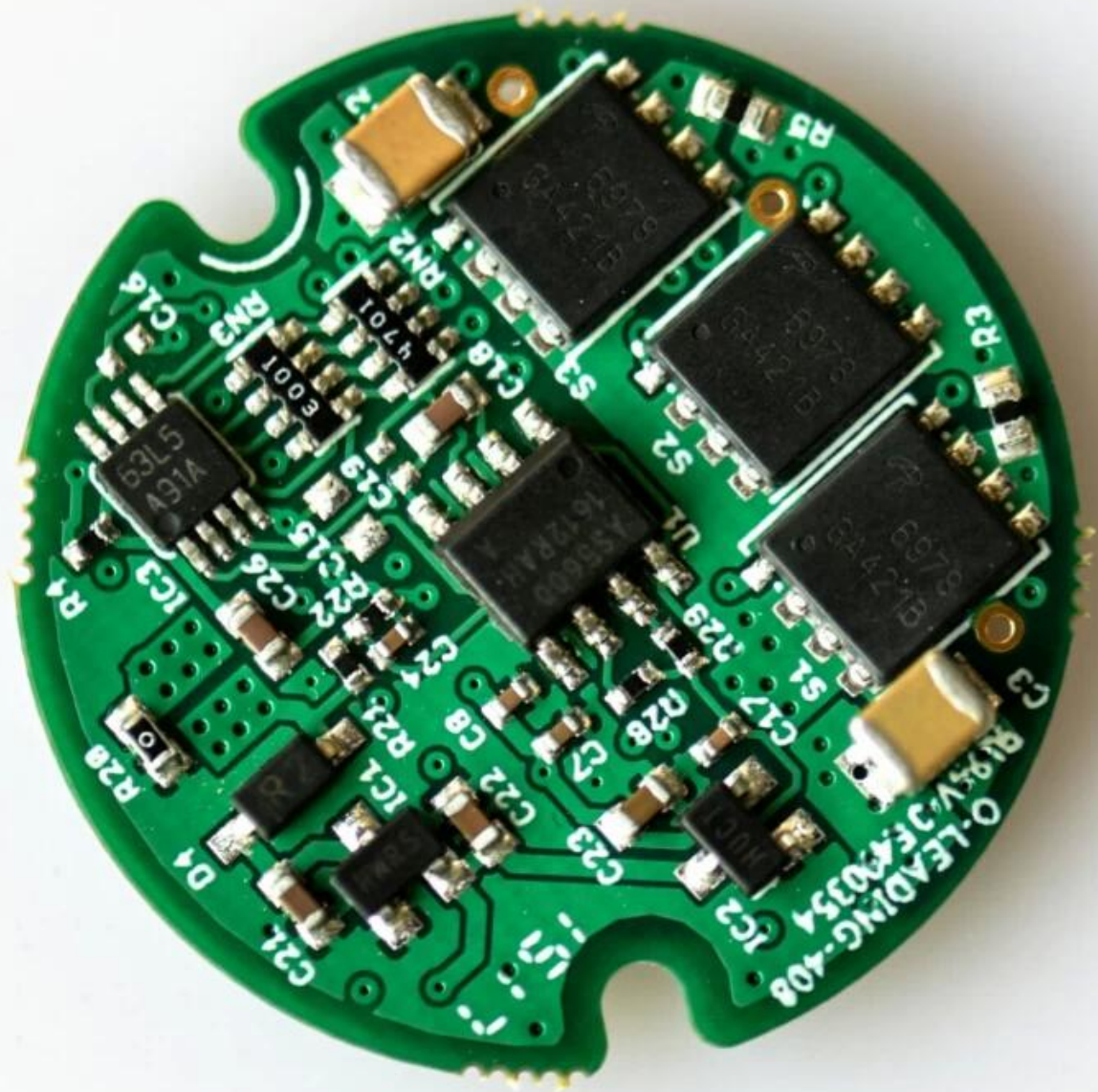
-----  
\*.GBL - Bottom Layer

\*.GBS - Bottom Soldermask

\*.GBO - Bottom Silkscreen

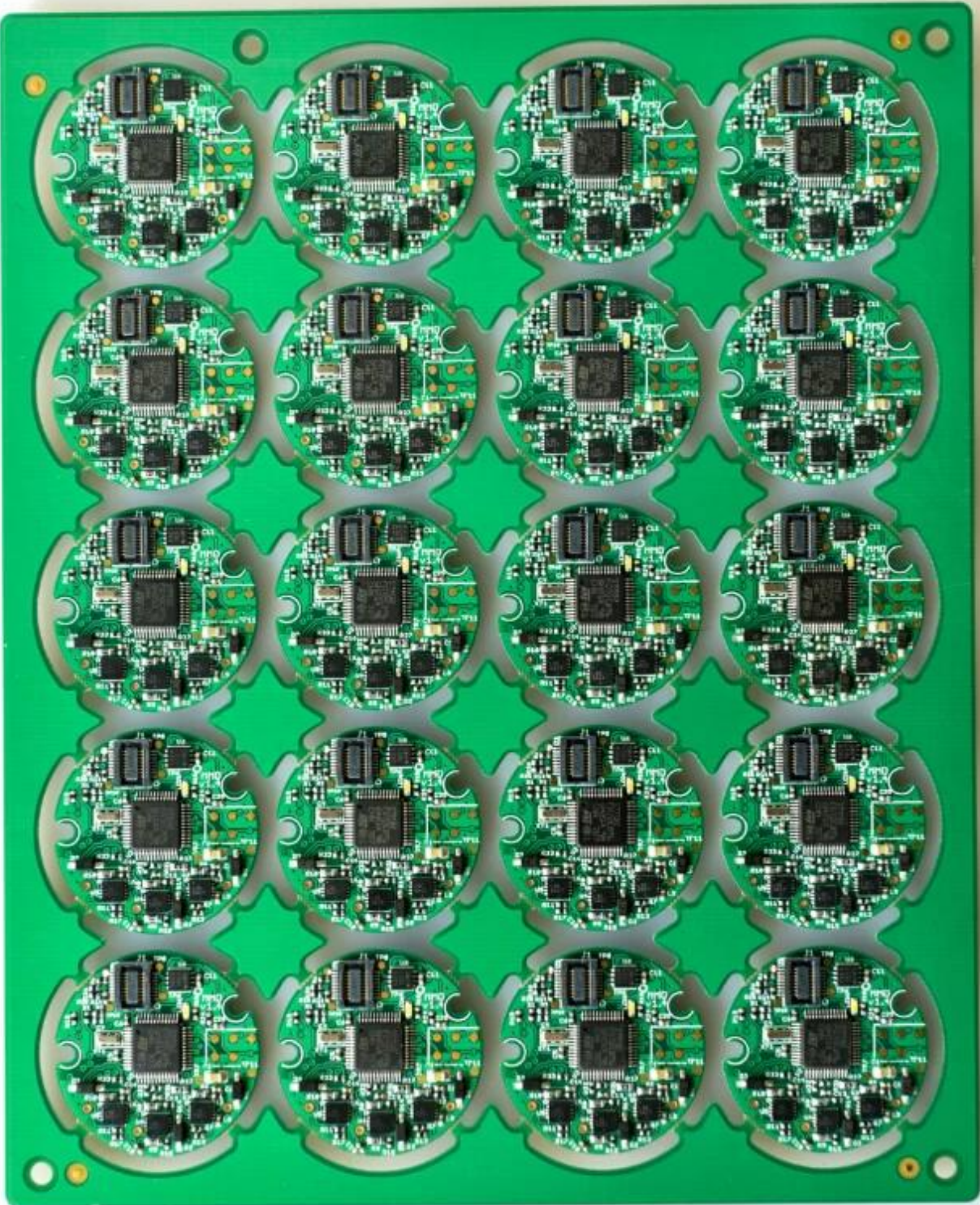
\*.GBP - Bottom Solder Paste

\*.GCMB - Bottom Conformal Coating Mask

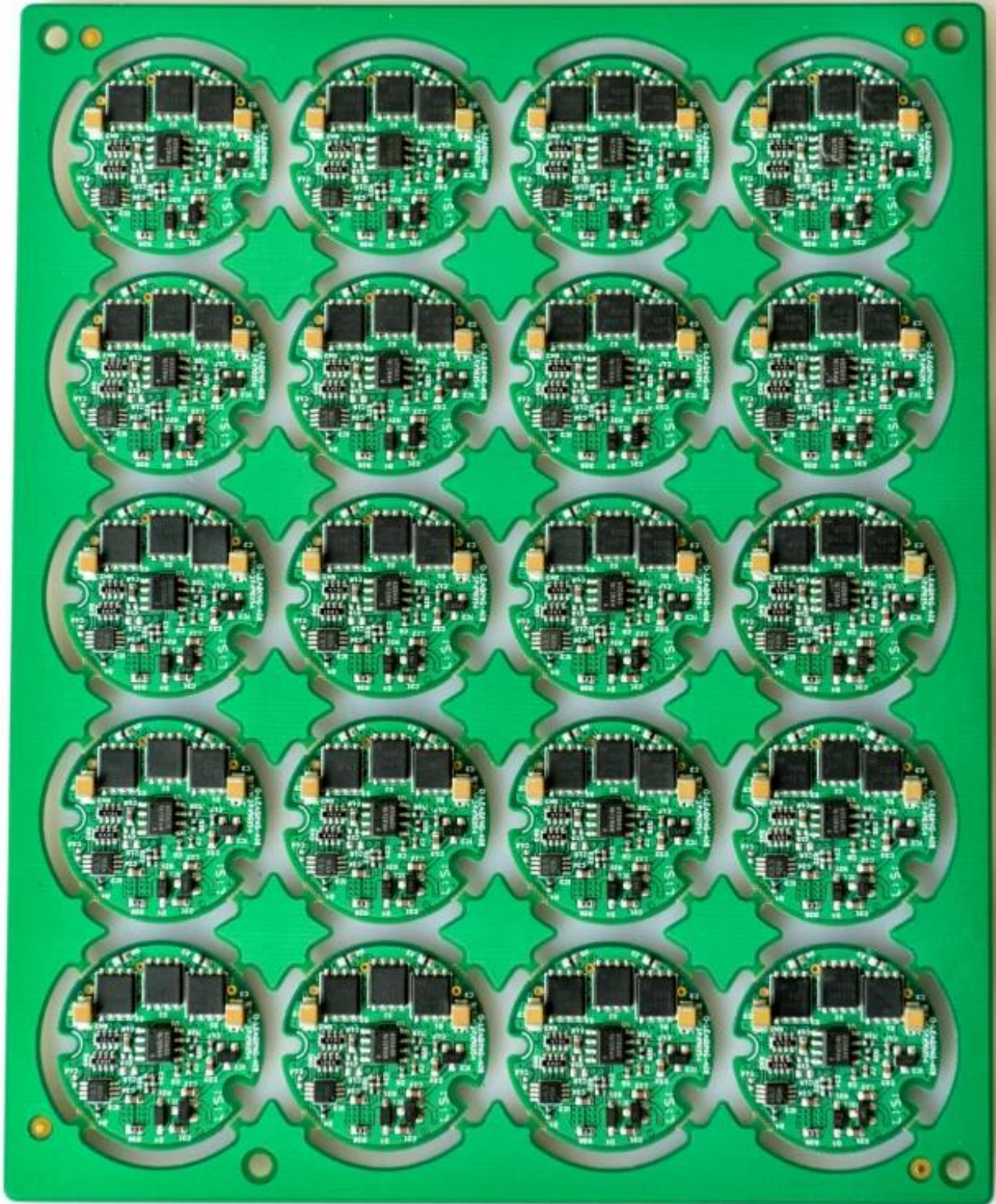












[Pcb prototype manufacturer china](#)