

# O-leading PCB PCB PCB PCB.

PCB 10 PCB PCB PCB PCB PCB. PCB - PCB, PCB PCB, PCB PCB, PCB PCB PCB MCPCB. PCB PCB PCB PCB PCB PCB  
 PCB PCB - 24 PCB S / S, 48-96 PCB PCB 4-8 PCB.

PCB PCB PCB .025 AVG, .020 MIN .. PCB PCB PCB PCB PCB

PCB PCB PCB PCB, 25 PCB / bag, PCB PCB PCB, PCB PCB PCB PCB



## led pcb board PCB PCB PCB

PCB PCB PCB PCB

PCB PCB PCB PCB

PCB PCB PCB

|              |                                     |              |               |
|--------------|-------------------------------------|--------------|---------------|
| PCB          | PCB, PCB (PCB)                      | PCB          | PCB - PCB     |
| PCB PCB      | FR-4, PCB PCB                       | PCB PCB      | 0.5oz ~ 5oz   |
| PCB. PCB PCB | 0.2mm                               | PCB. PCB PCB | 0.2mm         |
| PCB PCB      | PCB PCB, OSP, PCB HASL              | PCB PCB      | 0.1-5mm       |
| PCB PCB      | LED, PCB PCB, PCB PCB               | PCB PCB      | PCB PCB PCB   |
| PCB PCB      | ISO9001, UL, RoHS, SGS              | Q / CTN      | 10PCS-100PCS  |
| PCB PCB      | 0.01kg ~ 5kg                        | MOQ          | 10 PCB        |
| PCB PCB      | PCB PCB, PCB PCB, PCB PCB .yellow   | PCB. PCB PCB | 0.2mm         |
| PCB PCB      | PCB PCB pcb PCB PCB PCB PCB PCB PCB | PCB PCB      | \$ 0.1- \$ 10 |
| PCB PCB      | PCB PCB PCB                         | PCB PCB      | 0.01m3-10m3   |

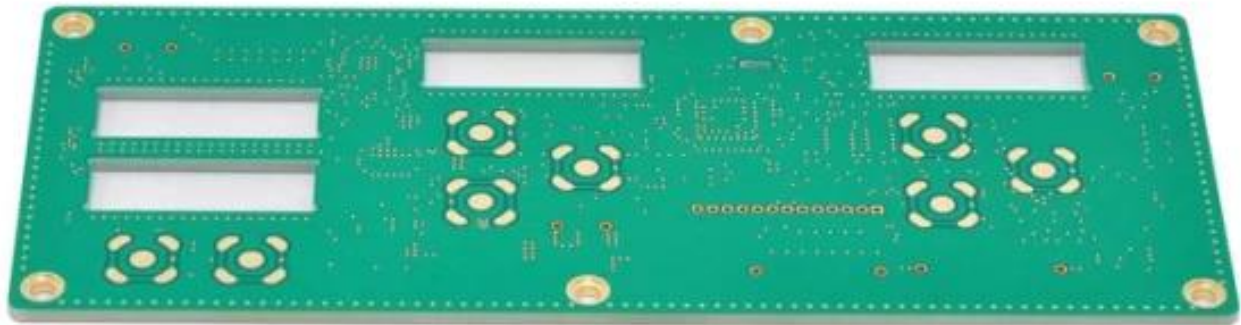
PCB & PCB

|               |                                |
|---------------|--------------------------------|
| PCB PCB PCB : | 16 PCB PCB OEM pcb PCB PCB PCB |
| PCB PCB PCB : | 7-12 PCB                       |

PCB PCB

| PCB                     | 2014   |        | 2015 ~ 2016 |        | 2017 ~ 2018 |        |
|-------------------------|--------|--------|-------------|--------|-------------|--------|
|                         | PCB    | PCB    | PCB         | PCB    | PCB         | PCB    |
| PCB PCB                 | 32     | 42     | 38 PCB      | 44     | 42          | 48     |
| PCB PCB / PCB PCB (µm)  | 50/50  | 40/45  | 40/45       | 40/40  | 35/40       | 35/35  |
| PCB PCB PCB<br>PCB (mm) | 0.15   | 0.10   | 0.15        | 0.10   | 0.15        | 0.10   |
| PCB PCB<br>PTH          | 14 : 1 | 16 : 1 | 16 : 1      | 18 : 1 | 18 : 1      | 20 : 1 |

|                         |   |           |           |           |           |           |
|-------------------------|---|-----------|-----------|-----------|-----------|-----------|
| N + C + N               | 4 + C + 4   | 5 + C + 5 | 5 + C + 5 | 6 + C + 6 | 5 + C + 5 | 6 + C + 6 |
| □□ □□ □□ □□             | 5 + 2 + 5   | 6 + 2 + 6 | 5 + 2 + 5 | 6 + 2 + 6 | 5 + 2 + 5 | 6 + 2 + 6 |
| □□□ □□□ □               | □   | -         | □         | -         | □         | -         |
| □□. □□ □□ (□□ □□) (μm)  | 50  | 40        | 40        | 30        | 40        | 30        |
| □□. □□□ □□ □□ (μm)      | 75  | 65        | 65        | 50        | 50        | 40        |
| □□ □ □□ □□<br>□ / □□ □□ | □   | -         | □         | -         | □         | -         |
| □□                      | FR4, Megtron, Nelco, Rogers, Heavy Copper □   |           |           |           |           |           |
| □□□□ □□□□ PCB           | □   | -         | □         | -         | □         | -         |
| □□ □□                   | □□ HASL, ENIG, OSP, □□□, □□ □□,<br>□□□ □, □ □□□ □□, □□□ □ □□,<br>□□ □ □□ □□□, □□ □□ |           |           |           |           |           |



[www.o-leading.com](http://www.o-leading.com)









**QUALITY MANAGEMENT SYSTEM CERTIFICATE**  
 Certificate No: 16118Q10347R05

**We hereby certify that**  
**O-LEADING SUPPLY CHAIN(HK) CO.,LIMITED**  
 Credit No: 61691591-000-07-17-2  
 Registration Add: ROOM 603D 6/F HANG PONT COMMERCIAL BUILDING,31 TONKIN ST,CHEUNG SHA WAN,KL, HK  
 Business Add: 1313 Floor 13 Fortune Building, Danstui Town Huiyang District, Huizhou, Guangdong, China

Has implemented and maintains a **Quality Management System**  
 Which fulfills the requirements of the following standards  
 GB/T19001-2016 idt ISO9001:2015

**Scope of certification**  
 Sales of printed circuit boards

Initial Issuance period: February 27, 2018  
 This certificate is valid during: February 27, 2018 -- February 26, 2021  
 This certificate is invalid without CICC qualified label in the following period

|                             |                |                              |                |
|-----------------------------|----------------|------------------------------|----------------|
| First supervision and audit | Qualified mark | Second supervision and audit | Qualified mark |
|-----------------------------|----------------|------------------------------|----------------|

The certification registration scope shall include those production services scopes which fall to be covered by the relevant effective administrative permission and qualification permission required by the state. The effectiveness of this certificate shall be evaluated by annual surveillance audit of CICC. The certificate shall be valid when used together with the surveillance audit conclusion. The related information of this certification can be searched at the public website of company www.cicc.com.cn.

201726 201VZL430354 - Wiring, Printed - Component



ZPMV2.E490354  
 Wiring, Printed - Component

For enhanced search functionality, please visit UL's [UL Product Databases](#).  
 Click on a product designation for complete information.  
[Page Bottom](#)

Wiring, Printed - Component

[See General Information for Wiring, Printed - Components](#)

**O-LEADING SUPPLY CHAIN CO LIMITED** 4190354  
 Fortune Building, Nanheng West Road  
 Room 1313  
 Huizhou, Guangdong 516211, CHINA

| Type   | Cond Width    |               |                    | SS/ DS/ Diam | Area       | Solder |      | Diper |     | Flame | RoHS | C |
|--|---------------|---------------|--------------------|--------------|------------|--------|------|-------|-----|-------|------|---|
|  | Min           | Max           | Min                |              |            | Max    | Temp | Class |     |       |      |   |
| Hub/Bayer (mass laminate) printed wiring boards. |               |               |                    |              |            |        |      |       |     |       |      |   |
| <b>O-LEADING-401</b>                             | 0.2 (0.004)   | 0.3 (0.012)   | 34 (1.34)          | D6           | 12.7 (0.5) | 260    | 10   | 130   | V-0 | -     | -    | - |
| <b>O-LEADING-407</b>                             | 0.08 (0.003)  | 0.2 (0.008)   | 17 (0.67)          | D5           | 9.2 (0.4)  | 260    | 10   | 170   | V-0 | NI    | -    | - |
| Hub/Bayer printed wiring boards.                 |               |               |                    |              |            |        |      |       |     |       |      |   |
| <b>O-LEADING-408</b>                             | 0.125 (0.005) | 0.125 (0.005) | 12 (0.47) 31(1.25) | D6           | 50.8 (2.0) | 260    | 20   | 130   | V-0 | NI    | -    | - |
| Single layer printed wiring boards.              |               |               |                    |              |            |        |      |       |     |       |      |   |
| <b>O-LEADING-002</b>                             | 0.76 (0.015)  | 1.14 (0.045)  | 34 (1.34)          | S5           | 19.1 (0.8) | 260    | 10   | 105   | V-0 | NI    | -    | - |
| <b>O-LEADING-003</b>                             | 0.38 (0.015)  | 1.14 (0.045)  | 34 (1.34)          | S5           | 19.1 (0.8) | 260    | 10   | 130   | V-0 | ▲     | -    | - |
| <b>O-LEADING-033</b>                             | 0.15 (0.006)  | 0.3 (0.012)   | 34 (1.34)          | S5           | 25.4 (1.0) | 260    | 10   | 120   | V-0 | NI    | -    | - |
| <b>O-LEADING-205</b>                             | 0.1 (0.004)   | 0.3 (0.012)   | 34 (1.34)          | D6           | 69.6 (2.7) | 260    | 10   | 130   | V-0 | NI    | -    | - |
| <b>O-LEADING-206</b>                             | 0.15 (0.006)  | 0.33 (0.013)  | 17 (0.67)          | D5           | 69.6 (2.7) | 260    | 10   | 130   | V-0 | NI    | -    | - |

\* - CTI marking is optional and may be marked on the printed wiring board.

Marking: Company name or file number and type designation. May be followed by a suffix to denote factory identification or burning test classification.  
 Last updated on 2017-01-27

Questions? [Print this page](#) [Terms of Use](#) [Page Top](#)

[http://www.ul.com/ulcertification/2017VZL430354-Wiring,Printed-Component](#)



**Test Report**

No. CANEC1805164701

Date: 03 Apr 2018

Page 2 of 8

Test Results:

Test Part Description:

Specimen No. **SGS Sample ID** **Description**  
 SN1 CAN18-051647.001 Green "PCB"

Remarks:

- (1) 1 mg/kg = 1 ppm = 0.0001%
- (2) MDL = Method Detection Limit
- (3) ND = Not Detected (< MDL)
- (4) "-" = Not Regulated

**RoHS Directive (EU) 2015/863 amending Annex II to Directive 2011/65/EU**

Test Method: With reference to IEC 62321-4:2014+A1:2017, IEC 62321-5:2013, IEC 62321-7-2:2017, IEC 62321-6:2015 and IEC 62321-8:2017, analyzed by ICP-OES, UV-Vis and GC-MS.

| Test Item(s)               | Limit | Unit  | MDL | Det |
|----------------------------|-------|-------|-----|-----|
| Cadmium (Cd)               | 100   | mg/kg | 2   | ND  |
| Lead (Pb)                  | 1,000 | mg/kg | 2   | 9   |
| Mercury (Hg)               | 1,000 | mg/kg | 2   | ND  |
| Hexavalent Chromium (CrVI) | 1,000 | mg/kg | 8   | ND  |
| Sum of PBBs                | 1,000 | mg/kg | -   | ND  |
| Monobromobiphenyl          | -     | mg/kg | 5   | ND  |
| Dibromobiphenyl            | -     | mg/kg | 5   | ND  |
| Tribromobiphenyl           | -     | mg/kg | 5   | ND  |
| Tetrabromobiphenyl         | -     | mg/kg | 5   | ND  |
| Pentabromobiphenyl         | -     | mg/kg | 5   | ND  |
| Hexabromobiphenyl          | -     | mg/kg | 5   | ND  |
| Heptabromobiphenyl         | -     | mg/kg | 5   | ND  |
| Octabromobiphenyl          | -     | mg/kg | 5   | ND  |
| Nonabromobiphenyl          | -     | mg/kg | 5   | ND  |
| Decabromobiphenyl          | -     | mg/kg | 5   | ND  |
| Sum of PBDEs               | 1,000 | mg/kg | -   | ND  |
| Monobromodiphenyl ether    | -     | mg/kg | 5   | ND  |
| Dibromodiphenyl ether      | -     | mg/kg | 5   | ND  |
| Tribromodiphenyl ether     | -     | mg/kg | 5   | ND  |
| Tetrabromodiphenyl ether   | -     | mg/kg | 5   | ND  |
| Pentabromodiphenyl ether   | -     | mg/kg | 5   | ND  |



SGS is pleased to announce the launch of its new online platform for the collection of test results. The platform is designed to be user-friendly and efficient, allowing clients to upload their test results directly to the system. This will enable clients to track their test results in real-time and receive notifications when their results are ready. The platform is available in multiple languages and is accessible from any device. For more information, please contact your account manager or visit [www.sgs.com](#).

Member of the SGS Group (SGS SA)

## □□ & □□

|          |                          |
|----------|--------------------------|
| □□ □□ □□ | 16 □ □□ OEM pcb □□ □□ □□ |
| □□ □□ □□ | 7-12 □                   |



## □□□□ □□

### 1. O-Leading□ □□□ □□□□ □□□□?

□□□□ □□□□ □□□□ □□ □□□□□□.

1. □ □□□□□ ISO 9001 : 2008 □□□□ □□ □□ □□□□□□.
2. □□ □□ □□□□□□ □□□□□□ □□□□ □□
3. State-of-art □□□□ □□ □ □□. □ : □□□□ □□□□, X □ □□, AOI (□□□□ □□□□) □ ICT (□□□□ □□□□).
4. □□ □□ □□ □□□□□□ □□ □ □□ □□ □□ □□
5. □□□□ □□ □□ □ □□

### 2. O-Leading□ □□ □□□□ □□□□ □□□□?

□□ 10 □ □□ □□ □□□□ (□ : □□, □□ □□) □□□□ □ □□, □ □ □□ □ □ □□□□□□. □□ □□ □□□□ □□ □□ 31 % □□□□ □□□□. □□ □□□□ □□ □□□□□□. □□□□ O-Leading□ □□□□ □□□□□□ □□□□□□. □□ □□ □□, □□□□ □□ □ □□□ □□□□ □□ □□□□ □□ □□□□. □ □□ □□□□ □□□□ □□ □□□□ □□ □□□□ □□□□.

□□□□ □□□□ □□ □□□□ □□□□ □□ □ □ □□□□ □□□□ □□ □□□□ □ □□□□.

### 3. O-Leading □□□□□□ □□ □□□□ □□ □ □□□□?

□□□□ FR4, □ TG □ □□□ □□ □□ □□, Rogers, Arlon, Telfon, □□□□ / □□ □□ □□, PI □

4. PCB 圖檔 輸出 圖檔 圖檔圖?

Gerber 274-X 圖檔 圖檔 圖檔 圖 圖 圖檔. 圖 Cam350, CAD, Protel 99se, PADS, DXP 圖 Eagle 圖 圖 圖 圖檔.

5. 圖 PCB 圖檔 圖 圖 圖檔圖?

圖 圖 → 圖 圖 圖 → 圖 圖 → 圖 AOI → 圖 圖 → 圖 → 圖 → 圖 → PTH → 圖 → 圖 圖 圖 → 圖 圖 → 圖 圖 → 圖  
圖 AOI → 圖 圖 → 圖 圖 → 圖 圖 → 圖 → E / T → 圖 圖.