

# O-leading PCB PCB MCPCB.

10 PCB PCB PCB PCB MCPCB. PCB - PCB, PCB PCB, PCB PCB MCPCB. PCB PCB PCB PCB PCB PCB - 24 S / S, 48-96 PCB PCB 4-8 PCB.

PCB PCB PCB .025 AVG, .020 MIN .. PCB PCB PCB PCB PCB

PCB PCB PCB, 25 PC / bag, PCB PCB PCB, PCB PCB PCB PCB

## PCB PCB

PCB PCB PCB

PCB	PCB, PCB (PCB)	PCB	PCB - PCB
PCB PCB	FR-4, PCB	PCB PCB	0.5oz ~ 5oz
PCB. PCB PCB	0.2mm	PCB. PCB PCB	0.2mm
PCB PCB	PCB PCB, OSP, PCB HASL	PCB PCB	0.1-5mm
PCB PCB	LED, PCB, PCB, PCB	PCB	PCB PCB PCB
PCB	ISO9001, UL, RoHS, SGS	Q / CTN	10PCS-100PCS
PCB	0.01kg ~ 5kg	MOQ	10 PCB
PCB	PCB, PCB, PCB, PCB .yellow	PCB. PCB PCB	0.2mm
PCB PCB	PCB PCB pcb PCB PCB pcha PCB PCB	PCB	\$ 0.1- \$ 10
PCB	PCB PCB PCB	PCB	0.01m3-10m3

PCB & PCB

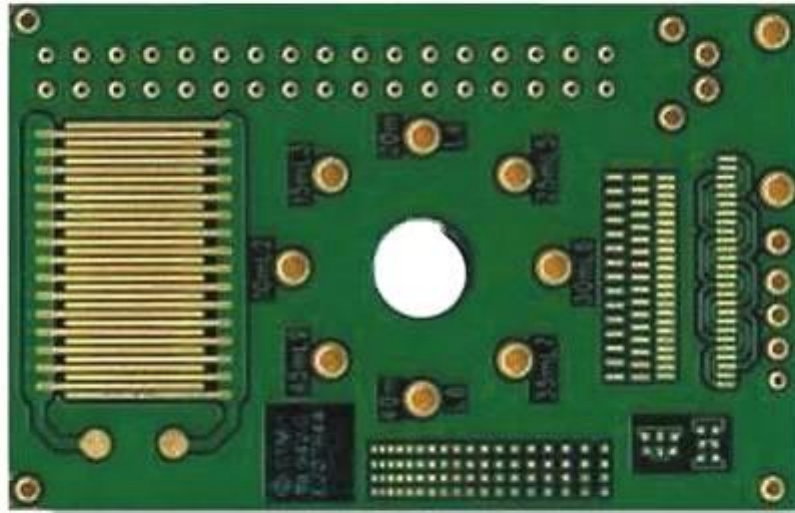
PCB PCB PCB :	16 PCB PCB OEM pcb PCB PCB PCB
PCB PCB PCB :	7-12 PCB

PCB PCB

### 16 PCB PCB OEM pcb PCB PCB

PCB	2014		2015 ~ 2016		2017 ~ 2018	
	PCB	PCB	PCB	PCB	PCB	PCB
PCB PCB	32	42	38 PCB	44	42	48
PCB PCB / PCB (μm)	50/50	40/45	40/45	40/40	35/40	35/35
PCB PCB PCB (mm)	0.15	0.10	0.15	0.10	0.15	0.10
PCB PTH	14 : 1	16 : 1	16 : 1	18 : 1	18 : 1	20 : 1
N + C + N	4 + C + 4	5 + C + 5	5 + C + 5	6 + C + 6	5 + C + 5	6 + C + 6

項目	5 + 2 + 5	6 + 2 + 6	5 + 2 + 5	6 + 2 + 6	5 + 2 + 5	6 + 2 + 6
銅厚 (μm)	50	40	40	30	40	30
鍍層厚 (μm)	75	65	65	50	50	40
材料	FR4, Megtron, Nelco, Rogers, Heavy Copper					
PCB 種類						
表面処理	HASL, ENIG, OSP, 無処理, 化学処理, 電鍍, 電鍍, 電鍍, 電鍍					



[www.o-leading.com](http://www.o-leading.com)

☐☐☐ : [☐☐☐☐ pcb wholesales ☐☐. ☐☐☐☐ pcb ☐☐☐☐. ☐☐☐☐ PCBs ☐☐](#)

☐☐ ☐







CICC INSPECTION CERTIFICATION



**QUALITY MANAGEMENT SYSTEM CERTIFICATE**

Certificate No.: 16118Q10347R05

**We hereby certify that**

**O-LEADING SUPPLY CHAIN(HK) CO.,LIMITED**

Credit No.: 61691591-000-07-17-2

Registration Add: ROOM 603D 6/F HANG PONT COMMERCIAL BUILDING,31 TONKIN ST,CHEUNG SHA WAN,KL, HK

Business Add: 1313 Floor 13 Fortune Building, Danstui Town Huiyang District, Huizhou, Guangdong, China

Has implemented and maintains a **Quality Management System** Which fulfills the requirements of the following standards  
GB/T19001-2016 idt ISO9001:2015

**Scope of certification**  
Sales of printed circuit boards

Initial Issuance period: February 27, 2018  
This certificate is valid during: February 27, 2018 -- February 26, 2021  
This certificate is invalid without CICC qualified label in the following period

First supervision and audit	Qualified mark	Second supervision and audit	Qualified mark
-----------------------------	----------------	------------------------------	----------------

The certification registration scope shall include the production services scope which fall to be covered by the relevant effective administrative permission and qualification permission required by the state. The effectiveness of this certificate shall be evaluated by annual surveillance audit of CICC. The certificate shall be valid when used together with the surveillance audit conclusion. The related information of this certification can be searched at the public website of website www.cicc.com.cn.







201726 201VZL430354 - Wiring, Printed - Component



**ZPMV2.E490354**  
Wiring, Printed - Component

For enhanced search functionality, please visit UL's [online family of databases](#). Click on a product designation for complete information.

[Page Bottom](#)

**Wiring, Printed - Component**

[See General Information for Wiring, Printed - Components](#)

**O-LEADING SUPPLY CHAIN CO LIMITED** 4190354  
Fortune Building, Nanheng West Road  
Room 1313  
Huizhou, Guangdong 516211, CHINA

Type	Cond Width			SS/ DS/ Diam	Area	Solder		Dper		Flame	RoHS	C
	Min	Max	Min			Max	Temp	Class				
<b>Multi-layer (mass laminate) printed wiring boards.</b>												
<b>D-LEADING-401</b>												
	0.2 (0.004)	0.3 (0.012)	34 (1.34)	D6	12.7 (0.5)	260	10	130	V-0	-	-	-
<b>D-LEADING-407</b>												
	0.08 (0.003)	0.2 (0.008)	17 (0.67)	D5	9.2 (0.4)	260	10	170	V-0	▲	-	-
<b>Multi-layer printed wiring boards.</b>												
<b>D-LEADING-408</b>												
	0.125 (0.005)	0.125 (0.005)	12 (0.47) 31(1.25)	D6	50.8 (2.0)	260	20	130	V-0	▲	-	-
<b>Single layer printed wiring boards.</b>												
<b>D-LEADING-002</b>												
	0.76 (0.015)	1.14 (0.045)	34 (1.34)	D5	19.1 (0.8)	260	10	105	V-0	▲	-	-
<b>D-LEADING-003</b>												
	0.38 (0.015)	1.14 (0.045)	34 (1.34)	D5	19.1 (0.8)	260	10	130	V-0	▲	-	-
<b>D-LEADING-033</b>												
	0.15 (0.006)	0.3 (0.012)	34 (1.34)	D5	25.4 (1.0)	260	10	120	V-0	▲	-	-
<b>D-LEADING-205</b>												
	0.1 (0.004)	0.3 (0.012)	34 (1.34)	D6	69.6 (2.7)	260	10	130	V-0	▲	-	-
<b>D-LEADING-206</b>												
	0.15 (0.006)	0.33 (0.013)	17 (0.67)	D5	69.6 (2.7)	260	10	130	V-0	▲	-	-

\* - CTI marking is optional and may be marked on the printed wiring board.

Marking: Company name or file number and type designation. May be followed by a suffix to denote factory identification or burning test classification. Last updated on 2017-01-27

Questions? [Print this page](#) [Terms of Use](#) [Page Top](#)

[http://www.ul.com/onlinecertifications/UL60718RMS/awg/ul/Prod/ZPMV2.E490354/comp/Wiring,Printed-Component/17](#)



**Test Report**

No. CANEC1805164701

Date: 03 Apr 2018

Page 2 of 8

Test Results:

Test Part Description:

Specimen No. **SGS Sample ID** **Description**  
SN1 CAN18-051647.001 Green "PCB"

Remarks:

- (1) 1 mg/kg = 1 ppm = 0.0001%
- (2) MDL = Method Detection Limit
- (3) ND = Not Detected (< MDL)
- (4) "-" = Not Regulated

**RoHS Directive (EU) 2015/863 amending Annex II to Directive 2011/65/EU**

Test Method: With reference to IEC 62321-4:2014+A1:2017, IEC62321-5:2013, IEC62321-7-2:2017, IEC 62321-6:2015 and IEC62321-8:2017, analyzed by ICP-OES, UV-Vis and GC-MS.

Test Item(s)	Limit	Unit	MDL	Det
Cadmium (Cd)	100	mg/kg	2	ND
Lead (Pb)	1,000	mg/kg	2	9
Mercury (Hg)	1,000	mg/kg	2	ND
Hexavalent Chromium (CrVI)	1,000	mg/kg	8	ND
Sum of PBBs	1,000	mg/kg	-	ND
Monobromobiphenyl	-	mg/kg	5	ND
Dibromobiphenyl	-	mg/kg	5	ND
Tribromobiphenyl	-	mg/kg	5	ND
Tetrabromobiphenyl	-	mg/kg	5	ND
Pentabromobiphenyl	-	mg/kg	5	ND
Hexabromobiphenyl	-	mg/kg	5	ND
Heptabromobiphenyl	-	mg/kg	5	ND
Octabromobiphenyl	-	mg/kg	5	ND
Nonabromobiphenyl	-	mg/kg	5	ND
Decabromobiphenyl	-	mg/kg	5	ND
Sum of PBDEs	1,000	mg/kg	-	ND
Monobromodiphenyl ether	-	mg/kg	5	ND
Dibromodiphenyl ether	-	mg/kg	5	ND
Tribromodiphenyl ether	-	mg/kg	5	ND
Tetrabromodiphenyl ether	-	mg/kg	5	ND
Pentabromodiphenyl ether	-	mg/kg	5	ND



SGS shall not be held responsible for any damage or loss of data or information caused by the use of the information provided on this website. The information provided on this website is for reference only and does not constitute a contract. The information provided on this website is subject to change without notice. The information provided on this website is not intended to be used as a basis for any legal action. The information provided on this website is not intended to be used as a basis for any legal action. The information provided on this website is not intended to be used as a basis for any legal action.

Member of the SGS Group (SGL SA)

## □□ & □□

□□ □□ □□	16 □ □□ OEM pcb □□ □□ □□
□□ □□ □□	7-12 □



## □□□□ □□

### 1. O-Leading□ □□□ □□□□□□□□?

□□□□ □□□□ □□□□ □□ □□□□□□.

1. □ □□□□□ ISO 9001 : 2008 □□□□ □□ □□□□□□□□.
2. □□ □□ □□□□□□ □□□□□□□□ □□□□ □□
3. State-of-art □□□□ □□ □□ □ □□□. □ : □□□□ □□□□, X □ □□, AOI (□□□□ □□□□) □ ICT (□□□□ □□□□).
4. □□ □□ □□ □□□□□□ □□ □ □□□ □□ □□ □□
5. □□□□ □□ □□ □ □□□

### 2. O-Leading□ □□ □□□□ □□□□□□□□?

□□ 10 □ □□ □□ □□□□ (□ : □□, □□ □□) □ □□□ □ □□, □ □ □□ □ □ □□□□□□□□. □□ □□ □□□□ □□ □□ 31 % □□□□ □□□□. □□ □□□□ □□ □□□□□□□□. □□□□ □□□□ □□□□□□□□ □□□□□□□□. □□ □□ □□, □□□□ □□ □ □□□ □□□□ □□ □□□□ □□ □□□□ □□ □□□□□□. □ □□ □□□□ □□□□ □□□□ □□ □□□□ □□ □□□□ □□□□□□□□.

### 3. O-Leading □□□□□□ □□ □□□□ □□ □ □□□□□□?

□□□□ FR4, □ TG □ □□□ □□ □□ □□, Rogers, Arlon, Telfon, □□□□ / □□ □□ □□, PI □

### 4. PCB □□□□ □□□□ □□□□□□□□?

Gerber 274-X □□□□ □□□□ □□□□ □□ □□ □□□□□□. □□ Cam350, CAD, Protel 99se, PADS, DXP □ Eagle□ □□ □ □□

□□□□.

5. □□ PCB□ □□□□ □□ □□□ □□□□□?

□□ □□ → □□ □□ □ → □□ □□ → □□ AOI → □□ □□ → □□ → □□ → □□ → PTH → □□ → □□ □□ □ → □□ □□ → □□ □□ → □  
□ AOI → □□ □□□ → □□ □□ → □□ □□ → □□□ → E / T → □□ □□.