

O

10 PCB - PCB MCPCB
 - 24 S / S 48-96 4-8

.025 AVG .020

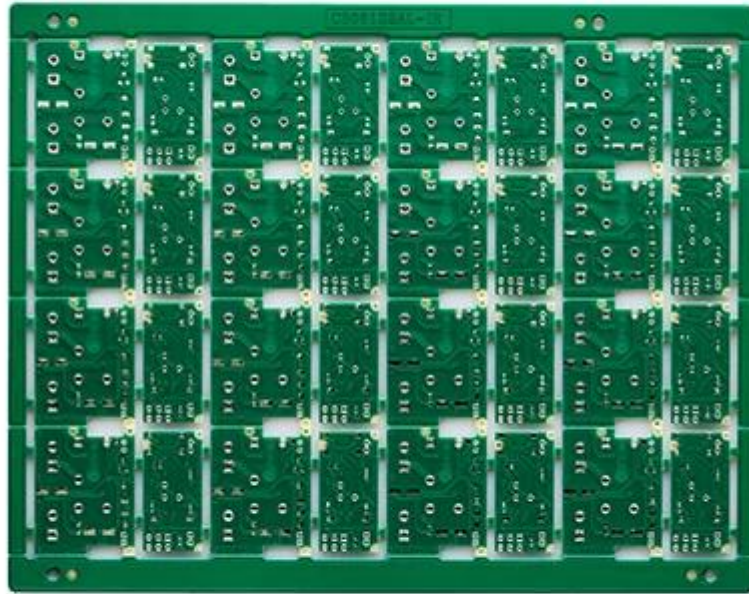
25 /

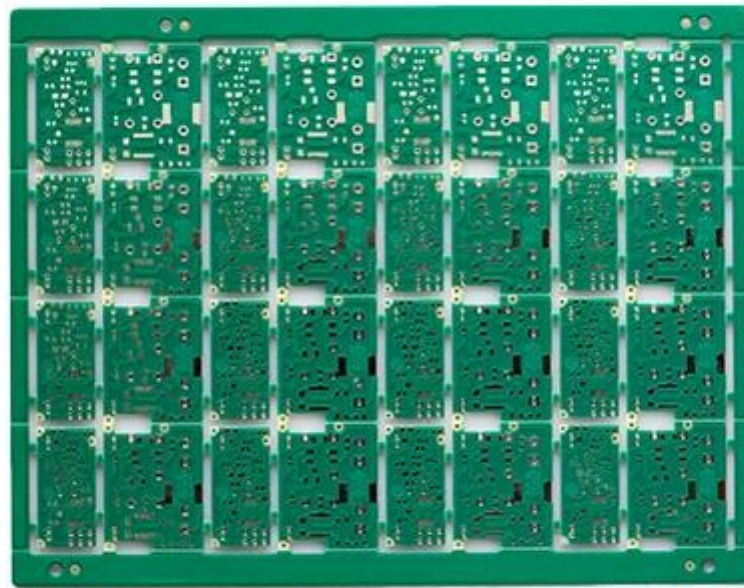
PCB

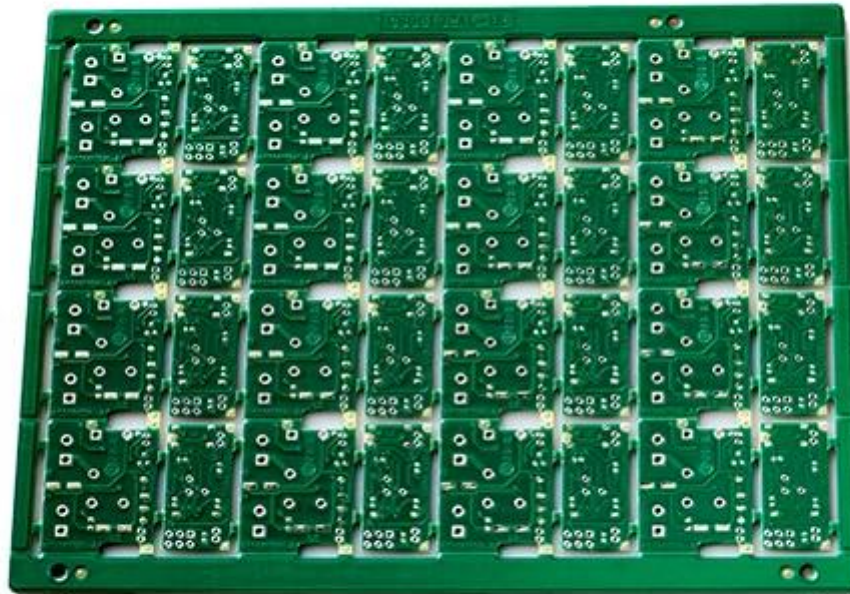
O

| | |
|-----------|----------------------------|
| PCB P / N | 3 / 3oz PCB |
| | 2L |
| | FR-4 TG130 |
| THK | 1.00mm |
| THK | 3/3 |
| | 0.50mm |
| | 106 |
| w / s | 10/10 |
| Y / N Tol | N |
| | LF-HASL |
| | / N / A |
| | X mm 44.5 Y mm 34 |
| | X mm 198; Y mm 156; UPS 16 |
| | N |
| | CNC |

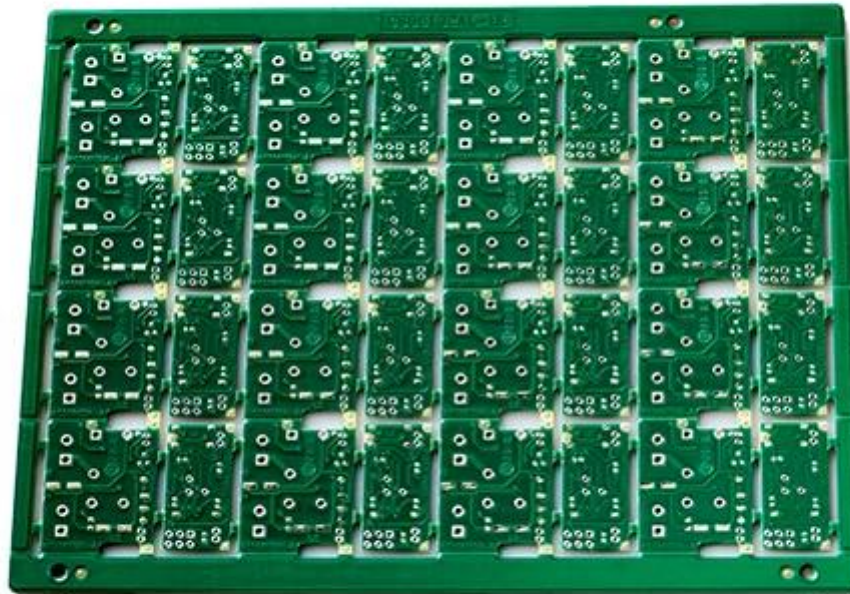
•





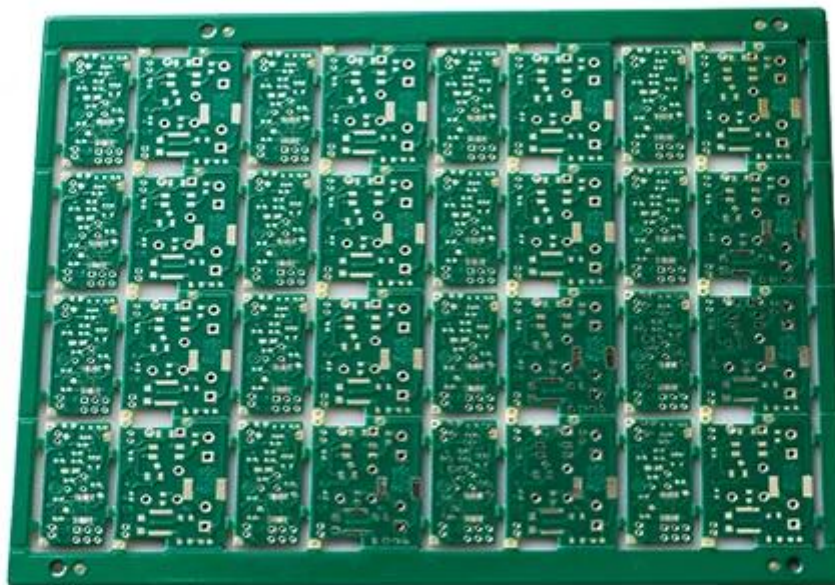


O-LEADING
To Be Reliable, To Be Valuable



www.o-leading.com

O-LEADING
To Be Reliable, To Be Valuable



www.o-leading.com







CICC INSPECTION CERTIFICATION



QUALITY MANAGEMENT SYSTEM CERTIFICATE

Certificate No: 16118Q10347R05

We hereby certify that

O-LEADING SUPPLY CHAIN(HK) CO.,LIMITED

Credit No: 61691591-000-07-17-2

Registration Add: ROOM 603D 6/F HANG PONT COMMERCIAL BUILDING,31 TONKIN ST,CHEUNG SHA WAN,KL, HK

Business Add: 1313 Floor 13 Fortune Building,DanShui Town Huiyang District, Huizhou, Guangdong, China

Has implemented and maintains a **Quality Management System** Which fulfills the requirements of the following standards
GB/T19001-2016 idt ISO9001:2015

Scope of certification
Sales of printed circuit boards

Initial Issuance period: February 27, 2018
This certificate is valid during: February 27, 2018 -- February 26, 2021
This certificate is invalid without CICC qualified label in the following period

| | | | |
|-----------------------------|----------------|------------------------------|----------------|
| First supervision and audit | Qualified mark | Second supervision and audit | Qualified mark |
|-----------------------------|----------------|------------------------------|----------------|

The certification registration scope does't include those products/services scope which fail to be covered by the relevant effective administrative permission and qualification permission required by the state. The effectiveness of this certificate shall be evaluated by annual surveillance audit of CICC. The certificate shall be valid when used together with the surveillance audit conclusion. The related information of this certification can be searched at the portal of the site of company www.cicc.com.cn.






201726 201VQ2E40354 - Wiring, Printed - Component



ZPMV2.E400354
Wiring, Printed - Component

For enhanced search functionality, please visit UL's [ULi Family of Databases](#). Click on a product designation for complete information.
[Page Bottom](#)

Wiring, Printed - Component

[See General Information for Wiring, Printed - Components](#)

O-LEADING SUPPLY CHAIN CO LIMITED 4190354
Fortune Building, Nanheng West Road
Room 1313
Huizhou, Guangdong 516211, CHINA

| Type | Cond Width | | | SS/ DS/ Di | Area Diam | Max | | Flame | RoHS | C | |
|---|---------------|---------------|-----------------------|------------------|--------------|--------|-------|-------|-------|-----|---|
| | Min | Min | Cond | | | Solder | Diper | | | | |
| | Min | Edge | Thk | DS/ | Di | Limits | Temp | Class | DSR | I | |
| | mm(in) | mm(in) | mic(mil) | DSO | mm(in) | C | sec | C | Class | DSR | I |
| Multi-layer (mass laminate) printed wiring boards. | | | | | | | | | | | |
| O-LEADING-401 | | | | | | | | | | | |
| | 0.2 (0.004) | 0.3 (0.012) | 34 (1.34) | D6 | 12.7 (0.5) | 260 | 10 | 130 | V-0 | - | - |
| O-LEADING-407 | | | | | | | | | | | |
| | 0.08 (0.003) | 0.2 (0.008) | 17 (0.67) | D5 | 9.2 (0.4) | 260 | 10 | 170 | V-0 | NI | - |
| Multi-layer printed wiring boards. | | | | | | | | | | | |
| O-LEADING-408 | | | | | | | | | | | |
| | 0.125 (0.005) | 0.125 (0.005) | 12 (0.47) min:1.25 | D6 | 50.8 (2.0) | 260 | 20 | 130 | V-0 | NI | * |
| Single layer printed wiring boards. | | | | | | | | | | | |
| O-LEADING-002 | | | | | | | | | | | |
| | 0.76 (0.015) | 1.14 (0.045) | 34 (1.34) | S5 | 19.1 (0.8) | 260 | 10 | 105 | V-0 | NI | - |
| O-LEADING-003 | | | | | | | | | | | |
| | 0.38 (0.015) | 1.14 (0.045) | 34 (1.34) | S5 | 19.1 (0.8) | 260 | 10 | 130 | V-0 | ▲ | - |
| O-LEADING-033 | | | | | | | | | | | |
| | 0.15 (0.006) | 0.3 (0.012) | 34 (1.34) | S5 | 25.4 (1.0) | 260 | 10 | 120 | V-0 | NI | - |
| O-LEADING-205 | | | | | | | | | | | |
| | 0.1 (0.004) | 0.3 (0.012) | 34 (1.34) | D6 | 69.6 (2.7) | 260 | 10 | 130 | V-0 | NI | - |
| O-LEADING-206 | | | | | | | | | | | |
| | 0.15 (0.006) | 0.33 (0.013) | 17 (0.67) | D5 | 69.6 (2.7) | 260 | 10 | 130 | V-0 | NI | - |

* - CTI marking is optional and may be marked on the printed wiring board.

Marking: Company name or file number and type designation. May be followed by a suffix to denote factory identification or burning test classification.
Last updated on 2017-01-27

Questions? [Print this page](#) [Terms of Use](#) [Page Top](#)

[http://www.ul.com/ulcertification/UL60716RMS/ulcertification/ZPMV2.E400354/Component/Wiring,Printed-Component/4190354](#)



Test Report No. CAVEC1805164701 Date: 03 Apr 2018 Page 2 of 8

Test Results:

Test Part Description:

Specimen No. **SGS Sample ID** **Description**
SN1 CA18-051647.001 Green PCB*

Remarks:

- (1) 1 mg/kg = 1 ppm = 0.0001%
- (2) MDL = Method Detection Limit
- (3) ND = Not Detected (< MDL)
- (4) * = Not Regulated

RoHS Directive (EU) 2015/863 amending Annex II to Directive 2011/65/EU

Test Method: With reference to IEC 62321-4:2014+A1:2017, IEC 62321-5:2013, IEC 62321-7-2:2017, IEC 62321-6:2015 and IEC 62321-8:2017, analyzed by ICP-OES, UV-Vis and GC-MS.

| Test Item(s) | Limit | Unit | MDL | Det |
|----------------------------|-------|-------|-----|-----|
| Cadmium (Cd) | 100 | mg/kg | 2 | ND |
| Lead (Pb) | 1,000 | mg/kg | 2 | 9 |
| Mercury (Hg) | 1,000 | mg/kg | 2 | ND |
| Hexavalent Chromium (CrVI) | 1,000 | mg/kg | 8 | ND |
| Sum of PBBs | 1,000 | mg/kg | - | ND |
| Monobromobiphenyl | - | mg/kg | 5 | ND |
| Dibromobiphenyl | - | mg/kg | 5 | ND |
| Tribromobiphenyl | - | mg/kg | 5 | ND |
| Tetrabromobiphenyl | - | mg/kg | 5 | ND |
| Pentabromobiphenyl | - | mg/kg | 5 | ND |
| Hexabromobiphenyl | - | mg/kg | 5 | ND |
| Heptabromobiphenyl | - | mg/kg | 5 | ND |
| Octabromobiphenyl | - | mg/kg | 5 | ND |
| Nonabromobiphenyl | - | mg/kg | 5 | ND |
| Decabromobiphenyl | - | mg/kg | 5 | ND |
| Sum of PBDEs | 1,000 | mg/kg | - | ND |
| Monobromodiphenyl ether | - | mg/kg | 5 | ND |
| Dibromodiphenyl ether | - | mg/kg | 5 | ND |
| Tribromodiphenyl ether | - | mg/kg | 5 | ND |
| Tetrabromodiphenyl ether | - | mg/kg | 5 | ND |
| Pentabromodiphenyl ether | - | mg/kg | 5 | ND |



SGS reserves all rights of printing, this document is issued by the Company subject to its General Conditions of Service printed on the reverse side and of reference to the Terms and Conditions of the Company's website. Any use of this document without the express written consent of SGS is prohibited. The information contained herein is for informational purposes only and does not constitute an offer of any financial product or service. The information is provided for your information only and does not constitute an offer of any financial product or service. The information is provided for your information only and does not constitute an offer of any financial product or service. The information is provided for your information only and does not constitute an offer of any financial product or service.

SGS (Shanghai) Inspection & Certification Co., Ltd. 150021 | 中国 上海 浦东新区世纪大道1500号 邮编: 200120
SGS (Guangzhou) Inspection & Certification Co., Ltd. 510633 | 中国 广州 天河区珠江新城华夏路10号 邮编: 510633

Member of the SGS Group (SGL SA)

| | |
|-------|--------------------|
| 00000 | 160000OEM PCB00000 |
| 00000 | 7-12 |



1. O-Leading

The ISO 9001

2.

X AOI ICT

4. Dedicated

5.

2. O-Leading

10 2 3 4 31

3. O-Leading

FR4 TG Rogers Arlon Telfon PI

4. PCB

Gerber 274-X Cam350 CAD Protel 99se PADS DXP Eagle

5. PCB

→ → AOI → → PTH → → → → E / T →