

O-PCB

10年PCB - PCB MCPCB. WE 48~96 48 4~8

.025 .020

25/

PCB

PCB

PCB

EN-4	0.5
0.2 mm	0.2 mm
OSP	0.1~5 mm
LED	PCB.
ISO9001 UL RoHS SGS	Q / CTN 10pcs-100
0.01 kg-5 kg	mo 10
	0.1~10
PCB PCBA	0.01 M3-10
	0.2mm

PCB

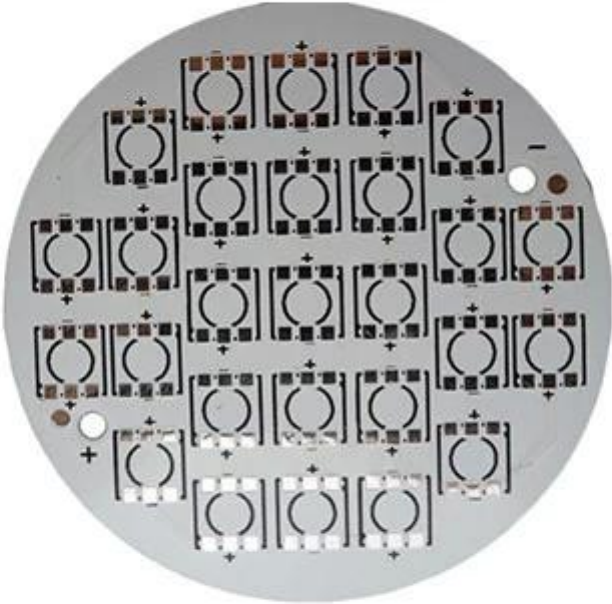
16 PCB OEM
7-12days.

PCB

16 OEM PCB

	2014.		2015 2016		2017 2018	
	32.	42.	38.	44	42.	48
μm	50/50	40/45	40/45	40/40	35/40	35/35
mm	0.15.	0.10	0.15.	0.10	0.15.	0.10
pth	14 1	16 1	16 1	18 1	18 1	20 1
N + C + N.	4 + C + 4	5 + C + 5	5 + C + 5	6 + C + 6	5 + C + 5	6 + C + 6
	5 + 2 + 5	6 + 2 + 6	5 + 2 + 5	6 + 2 + 6	5 + 2 + 5	6 + 2 + 6
		-		-		-

外层铜厚μm	50.	40.	40.	30.	40.	30.
内层铜厚μm	75.	65	65	50.	50.	40.
阻焊/电镀	干膜	-	干膜	-	干膜	-
基材	FR4					
表面处理PCB	锡	-	锡	-	锡	-
表面处理	ENIG OSP					



www.o-leading.com



www.o-leading.com



www.o-leading.com







QUALITY MANAGEMENT SYSTEM CERTIFICATE
 Certificate No: 16118Q10347R05

We hereby certify that
O-LEADING SUPPLY CHAIN(HK) CO.,LIMITED
 Credit No: 61691591-000-07-17-2
 Registration Add: ROOM 603D 6/F HANG PONT COMMERCIAL BUILDING,31 TONKIN ST,CHEUNG SHA WAN,KL, HK
 Business Add: 1313 Floor 13 Fortune Building, Danstui Town Huiyang District, Huizhou, Guangdong, China

Has implemented and maintains a **Quality Management System**
 Which fulfills the requirements of the following standards
 GB/T19001-2016 idt ISO9001:2015

Scope of certification
 Sales of printed circuit boards

Initial Issuance period: February 27, 2018
 This certificate is valid during: February 27, 2018 -- February 26, 2021
 This certificate is invalid without CICC qualified label in the following period

First supervision and audit	Qualified mark	Second supervision and audit	Qualified mark
-----------------------------	----------------	------------------------------	----------------

The certification registration scope shall include those products/services scopes which fall to be covered by the relevant effective administrative permission and qualification permission required by the state. The effectiveness of this certificate shall be evaluated by annual surveillance audit of CICC. The certificate shall be valid when used together with the surveillance audit conclusion. The related information of this certification can be searched at the public website of company www.cicc.com.cn.

201726 201VZL430354 - Wiring, Printed - Component

UL ONLINE CERTIFICATIONS DIRECTORY

ZPMV2.E490354
Wiring, Printed - Component

For enhanced search functionality, please visit UL's [UL Product Databases](#).
 Click on a product designation for complete information.
[Page Bottom](#)

Wiring, Printed - Component

[See General Information for Wiring, Printed - Components](#)

O-LEADING SUPPLY CHAIN CO LIMITED E490354

Fortune Building, Nanheng West Road
 Room 1313
 Huizhou, Guangdong 516211, CHINA

	Cond Width			SS/ DS/ Diam	Area	Solder		Diper		Flame	RoHS	C
	Min	Max	Min			Max	Min	Max				
Typ	max(in)	mm(in)	mic(mil)	DS0	mm(in)	C	sec	C	Class	DSR	I	
Multi-layer (mass laminate) printed wiring boards.												
D-LEADING-401												
	0.2 (0.004)	0.3 (0.012)	34 (1.34)	D6	12.7 (0.5)	260	10	130	V-0	-	-	
D-LEADING-407												
	0.08 (0.003)	0.2 (0.008)	17 (0.67)	D5	9.2 (0.4)	260	10	130	V-0	NI	-	
Multi-layer printed wiring boards.												
D-LEADING-408												
	0.125 (0.005)	0.125 (0.005)	12 (0.47) 31(1.25)	D6	50.8 (2.0)	260	20	130	V-0	NI	*	
Single layer printed wiring boards.												
D-LEADING-002												
	0.76 (0.015)	1.14 (0.045)	34 (1.34)	D5	19.1 (0.8)	260	10	105	V-0	NI	-	
D-LEADING-003												
	0.38 (0.015)	1.14 (0.045)	34 (1.34)	D5	19.1 (0.8)	260	10	130	V-0	▲	-	
D-LEADING-033												
	0.15 (0.006)	0.3 (0.012)	34 (1.34)	D5	25.4 (1.0)	260	10	120	V-0	NI	-	
D-LEADING-205												
	0.1 (0.004)	0.3 (0.012)	34 (1.34)	D6	69.6 (2.7)	260	10	130	V-0	NI	-	
D-LEADING-206												
	0.15 (0.006)	0.33 (0.013)	17 (0.67)	D5	69.6 (2.7)	260	10	130	V-0	NI	-	

* - CTI marking is optional and may be marked on the printed wiring board.

Marking: Company name or file number and type designation. May be followed by a suffix to denote factory identification or burning test classification.
 Last updated on 2017-01-27

Questions? [Print this page](#) [Terms of Use](#) [Page Top](#)

[http://www.ul.com/ulcertification/UL60718RMS/ewg/zpmv2.e490354.html?from=ZPMV2.E490354&category=Wiring,Printed-Component&id=10](#)



Test Report No. CANEC1805164701 Date: 03 Apr 2018 Page 2 of 8

Test Results:

Test Part Description:

Specimen No. **SGS Sample ID Description**
 SN1 CAN18-051647.001 Green PCB*

Remarks:

- (1) 1 mg/kg = 1 ppm = 0.0001%
- (2) MDL = Method Detection Limit
- (3) ND = Not Detected (< MDL)
- (4) * = Not Regulated

RoHS Directive (EU) 2015/863 amending Annex II to Directive 2011/65/EU

Test Method: With reference to IEC 62321-4:2014+A1:2017, IEC 62321-5:2013, IEC 62321-7-2:2017, IEC 62321-6:2015 and IEC 62321-8:2017, analyzed by ICP-OES, UV-Vis and GC-MS.

Test Item(s)	Limit	Unit	MDL	Det
Cadmium (Cd)	100	mg/kg	2	ND
Lead (Pb)	1,000	mg/kg	2	9
Mercury (Hg)	1,000	mg/kg	2	ND
Hexavalent Chromium (CrVI)	1,000	mg/kg	8	ND
Sum of PBBs	1,000	mg/kg	-	ND
Monobromobiphenyl	-	mg/kg	5	ND
Dibromobiphenyl	-	mg/kg	5	ND
Tribromobiphenyl	-	mg/kg	5	ND
Tetrabromobiphenyl	-	mg/kg	5	ND
Pentabromobiphenyl	-	mg/kg	5	ND
Hexabromobiphenyl	-	mg/kg	5	ND
Heptabromobiphenyl	-	mg/kg	5	ND
Octabromobiphenyl	-	mg/kg	5	ND
Nonabromobiphenyl	-	mg/kg	5	ND
Decabromobiphenyl	-	mg/kg	5	ND
Sum of PBDEs	1,000	mg/kg	-	ND
Monobromodiphenyl ether	-	mg/kg	5	ND
Dibromodiphenyl ether	-	mg/kg	5	ND
Tribromodiphenyl ether	-	mg/kg	5	ND
Tetrabromodiphenyl ether	-	mg/kg	5	ND
Pentabromodiphenyl ether	-	mg/kg	5	ND



SGS is pleased to announce that it has been awarded the ISO 9001:2015 certification for its services of testing, inspection, and certification. SGS is a member of the Bureau Veritas Group. SGS is a leader in the field of testing, inspection, and certification services. SGS is a member of the Bureau Veritas Group. SGS is a leader in the field of testing, inspection, and certification services. SGS is a member of the Bureau Veritas Group. SGS is a leader in the field of testing, inspection, and certification services.

Member of the SGS Group (SGL SA)

□□□□

□□□□	16□□□□OEM PCB□□□□□□
□□□□	7-12days.

Shipping service



□□□□

1. □□□□□□□□□□□□□□□□
□□□□□□□□□□□□□□□□

1. The □□□□□□ ISO 9001 □2008 □□□□□□□□□□□□□□□□□□□□
□□□□□□□□□□□□□□□□□□□□

3. □□□□□□□□□□□□□□□□□□□□□□□□□□□□□□□□□□□□□□
X□□□□□□□□□□□□□□□□□□□□□□□□□□□□□□□□□□□□□□

4. □□□□□□□□□□□□□□□□□□□□□□□□□□□□□□□□□□□□□□

5. □□□□□□□□□□□□□□□□□□□□□□□□□□□□□□□□□□□□□□

2. □□□□□□□□□□□□□□□□□□□□□□□□□□□□□□□□□□□□□□

□□10□□□□□□□□□□□□□□□□□□□□□□□□□□□□□□□□□□□□□□
2□□3□□□□□□□□□□□□□□□□□□□□□□□□□□□□□□□□□□□□□□□
RMB□□□□□□31□□□□□□□□□□□□□□□□□□□□□□□□□□□□□□□□□□□□□□
□□□
O-□□□
□□□
□□□

3. □□□□□□□□□□□□□□□□□□□□□□□□□□□□□□□□□□□□□□

□□□□FR4□□TG□□□□□□□□□□□□□□□□□□□□□□□□□□□□□□□□□□□□□□
/□□□

4. PCB□□□□□□□□□□□□□□□□□□□□□□□□□□□□□□□□□□□□□□

Gerber 274-X CAM350 CAD Protel 99Se DXP Eagle

5. PCB

→ AOI → PTH → E / T