

# O

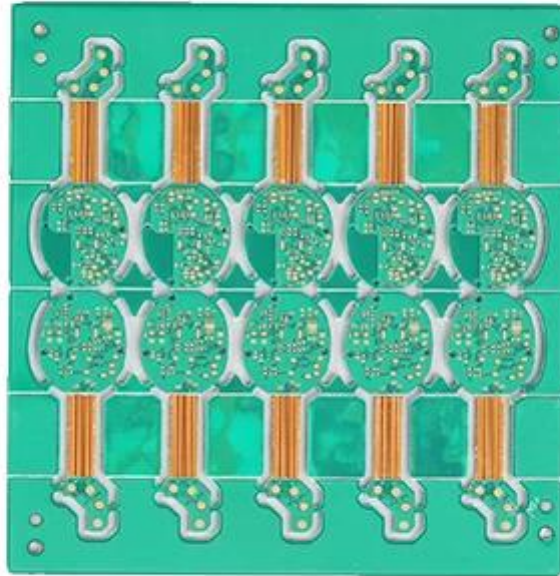
10 PCB - PCB MCPCB  
 - 24 S / S 48-96 4-8

.025 AVG .020

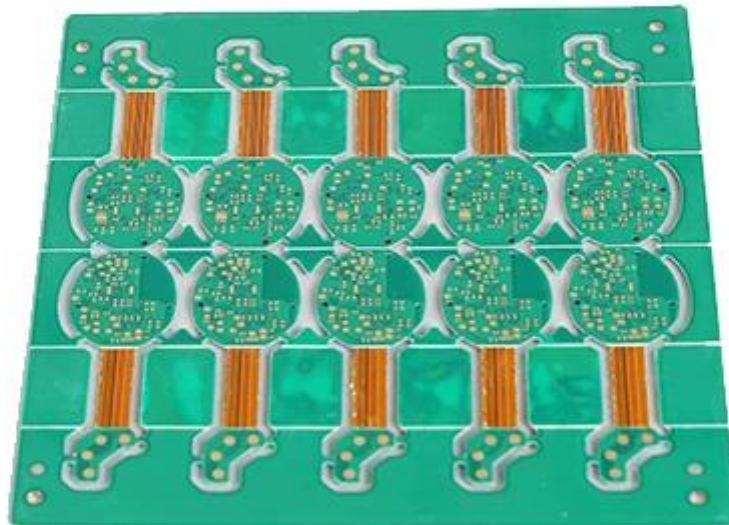
25

# O

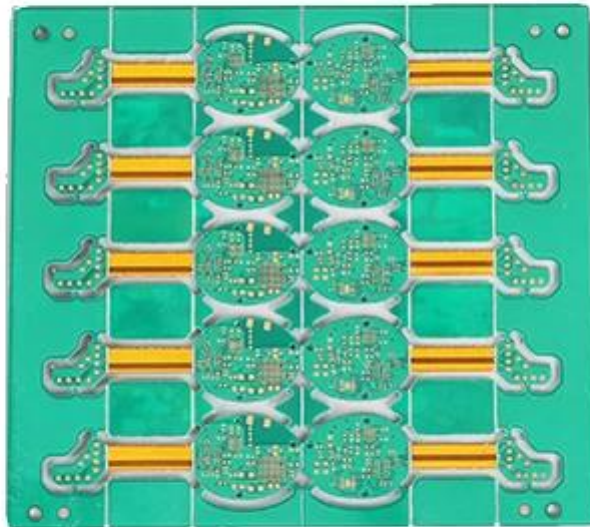
PCB P / N	x-out 6L - PCB
	6L 4L + 2L
	FR-4 TG150
THK	0.80mm
cTHK	1 / H / H / H / H / 1
	0.20mm
	187
w / s	4/4
Y / N Tol	Y
	Au 0.05-0.12UM
	/
size	X mm 29.8 Y mm 11.2
Panelisation	Dim X mm 73.6; Dim Y mm 74; UPS 10
	N
	CNC



[www.o-leading.com](http://www.o-leading.com)



[www.o-leading.com](http://www.o-leading.com)



[www.o-leading.com](http://www.o-leading.com)















5. PCB

→ → AOI → → PTH → → → → E / T →