

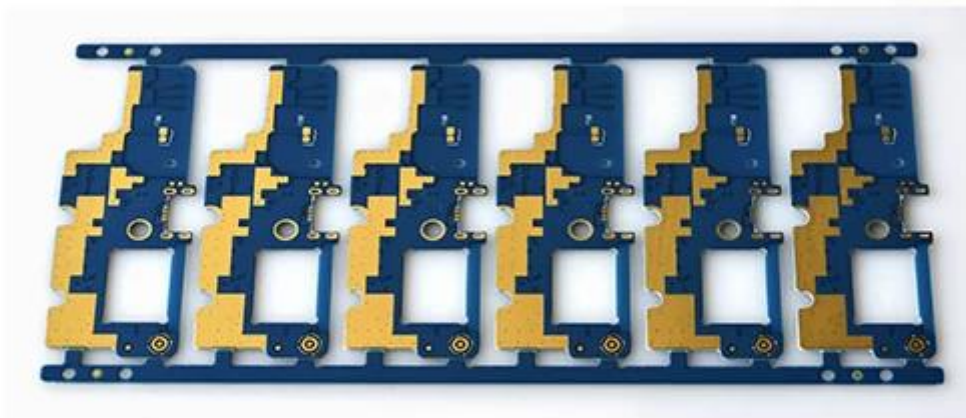
# Willkommen bei o-führend

O-Lead ist einst bemüht, Ihr One-Stop-Lösungspartner in der EMS-Lieferkette zu sein, einschließlich PCB-Design, PCB-Fabrikation und PCB-Baugruppe (PCBA). Wir bieten einigen der fortschrittlichsten PCB-Technologie, einschließlich HDI-Leiterplatten, mehrschichtige Leiterplatten, steif-flexible PCBs Wir können von einem schnellen Turn-Prototyp zur mittleren & Massenproduktion unterstützen.

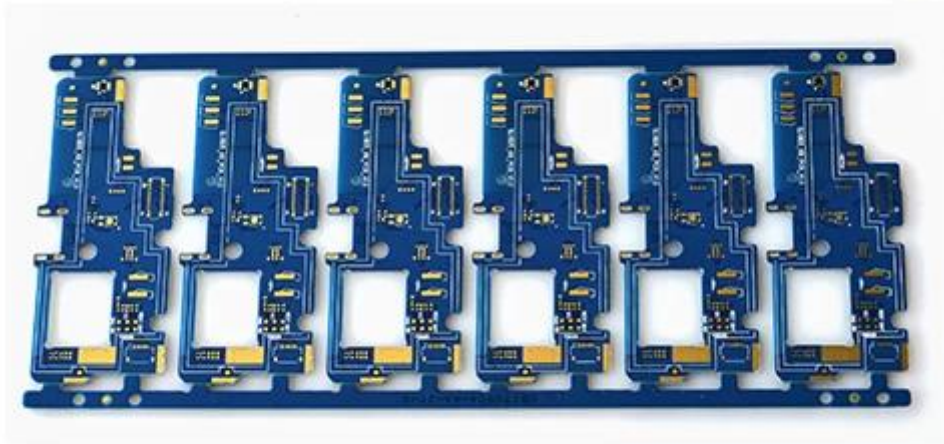
Im Allgemeinen sind unsere globalen Kunden sehr beeindruckt von unseren Diensten: Schnelle Reaktion, wettbewerbsfähiger Preise und Qualitätszusagen. Provovieren mehr wertvoller technischer Service und allgemeine Lösung ist der Weg, der nach vorne führt.

Wenn Sie auf die Zukunft suchen, konzentriert sich o-führend auf die Innovation und Entwicklung der Elektronikfertigungstechnologie sowie anhaltende Anstrengungen für den PCB- und PCBA-One-Stop-Service, um erstklassige Dienste bereitzustellen und für unsere Kunden mehr Wert zu schaffen.

Bitte klicken Sie auf diese, um weitere Informationen zu erhalten: [OEM-PCB-Board-Hersteller](#)



[www.o-leading.com](http://www.o-leading.com)



[www.o-leading.com](http://www.o-leading.com)

|                        |   |                        |                             |
|------------------------|---|------------------------|-----------------------------|
| Herkunftsort           | Guangdong China (Festland)                          | Markenname             | O-führend                   |
| Basismaterial          | FR-4, Aluminium, Rogers, schweres Kupfer usw.       | Kupferdicke.           | 0,5z-5oz.                   |
| Mindest. Lochgröße     | 0,2 mm  | Mindest. Linienbreite  | 0,2 mm                      |
| Oberflächenveredelung. | Immersion Gold / Zinn / Silber, OSP, Lead Free Hasl | Mindest. Zeilenabstand | 0,2 mm                      |
| anwendbar auf          | LED, Mobiltelefon, Klimaanlage, Waschmaschinen      | Charakter              | Industrielle Steuerung PCB. |
| Zertifikate            | ISO9001, UL, ROHS, SGS                              | Q / ctn.               | Kundenanforderung.          |
| Gewicht                | 0,01 kg -5kg.                                       | Moq.                   | 10pcs.                      |
| Farbe                  | blau, rot, grün, schwarz.                           | Boarddicke.            | 0,1-5 mm                    |
| Modell-Nr              | PCB-Baugruppe PCBA-Hersteller                       | Preis                  | \$ 0,1- \$ 10               |
| Desique-Typ.           | Kundenanforderung.                                  | Größe                  | 0,01 m-10m3.                |

Unser Team



---

Factory PCB

---



Automatic vacuum press machine



Drilling Machine



Pattern Plating Machine



Scrubbing Machine



Developing Machine



Routing Machine



High-speed flying probe machine



E-test Machine

---

Factory SMT

---





# Zertifizierungen

CICC INSPECTION CERTIFICATION



**嘉泰认证**

**QUALITY MANAGEMENT SYSTEM CERTIFICATE**  
Certificate No: 18118Q10347R05

**We hereby certify that**  
**O-LEADING SUPPLY CHAIN(HK) CO.,LIMITED**  
Credit No: 61691591-000-07-18-7  
Registration Add: FLAT/RM 1205 12/F TAI SANG BANK BUILDING 130-132 DES VODEUS ROAD CENTRAL HK  
Business Add: 1213, Floor 13, Fortune Building, Danshui Town, Huiyang District, Huizhou, Guangdong, China

Has implemented and maintains a **Quality Management System** Which fulfills the requirements of the following standards  
GB/T19001-2016 idt ISO9001:2015

**Scope of certification**  
Sales of printed circuit boards

Initial issuance period: February 27, 2018  
Renewal date: April 22, 2019  
This certificate is valid during: April 22, 2019 – February 26, 2021  
This certificate is invalid without CICC qualified label in the following period

|                             |                              |                |
|-----------------------------|------------------------------|----------------|
| First supervision and audit | Second supervision and audit | Qualified mark |
|-----------------------------|------------------------------|----------------|

The certification registration number does not include those production stages which fail to be covered by the relevant effective administrative procedures and qualification procedures stipulated by the client. The effectiveness of this certificate shall be restricted to actual certification scope of CICC. The certificate shall be valid when used together with the qualified mark issued.

The initial issuance of this certification can be searched on the portal of CICC [www.cicc.com.cn](http://www.cicc.com.cn) by the code of inquiry [www.cicc.com.cn](http://www.cicc.com.cn).






CICC INSPECTION CERTIFICATION



**嘉泰认证**

**质量管理体系认证证书**  
证书号: 18118Q10347R05

**兹证明**  
**诚领供应链（香港）有限公司**  
统一社会信用代码: 61691591-000-07-18-7  
注册地址: 香港中環德輔道中130-132號大生銀行大廈1205室  
经营地址: 广东惠州惠阳淡水南亨西路财富大厦13楼1313

建立的质量管理体系符合  
GB/T19001-2016 idt ISO9001:2015 质量标准适用条款的要求

**认证范围**  
印刷线路板的销售

初次获证日期: 2018年02月27日  
换证日期: 2019年04月22日  
证书有效期: 自2019年04月22日至2021年02月26日  
在下列期限内, 未经CICC黏贴合格标贴, 本证书无效

|       |       |     |
|-------|-------|-----|
| 第一次监督 | 第二次监督 | 黏贴处 |
|-------|-------|-----|

本证书认证范围不包括未取得有效的国家规定的行政许可、资质许可的产品/服务范围; 本证书通过CICC定期监督审核保持, 与年度《保持认证通知书》共同方为有效; 本证书信息可在国家认监委网站: [www.cnca.gov.cn](http://www.cnca.gov.cn)及CICC网站[www.cicc.com.cn](http://www.cicc.com.cn)查询。








Test Report

No. SZXEC1900530401 Date: 30 Mar 2019 Page 1 of 6

O-LEADING SUPPLY CHAIN (HK) CO., LIMITED

1313.FLOOR 13, FORTUNE BUILDING, DANSHUI TOWN, HUIYANG DISTRICT, HUIZHOU, GUANGDONG, CHINA

The following sample(s) was/were submitted and identified on behalf of the clients as : OSP

SGS Job No. : RP19-005089 - SZ
Date of Sample Received : 22 Mar 2019
Testing Period : 22 Mar 2019 - 30 Mar 2019
Test Requested : Selected test(s) as requested by client.
Test Method : Please refer to next page(s).
Test Results : Please refer to next page(s).

Conclusion : Based on the performed tests on submitted sample(s), the results of Lead, Mercury, Cadmium, Hexavalent chromium, Polybrominated biphenyls (PBBs), Polybrominated diphenyl ethers (PBDEs) and Phthalates such as Bis(2-ethylhexyl) phthalate (DEHP) , Butyl benzyl phthalate (BBP), Dibutyl phthalate (DBP) , and Diisobutyl phthalate (DIBP) comply with the limits as set by RoHS Directive (EU) 2015/863 amending Annex II to Directive 2011/65/EU.

Signed for and on behalf of
SGS-CSTC Standards Technical Services Co., Ltd. Shenzhen Branch

Tina
Tina Fan
Approved Signatory



Unless otherwise agreed in writing, this document is issued by the Company subject to its General Conditions of Service printed overleaf, available on request or accessible at http://www.sgs.com/terms-and-conditions.aspx and, for electronic format documents, subject to Terms and Conditions for Electronic Documents at http://www.sgs.com/terms-and-conditions/Electronic-Document.aspx. Attention is drawn to the limitation of liability, indemnification and jurisdiction issues defined therein. Any holder of this document is advised that unless he/she expressly agrees to the Company's liability at the time of its intended use, the limits of the Company's liability are restricted to the extent of the Company's liability under the applicable law. This document does not constitute an offer of any financial product or service of the Company. Any disclaimer, limitation, waiver or indemnification of the Company's liability or appearance of this document is unlawful and offenders may be prosecuted to the fullest extent of the law. Unless otherwise stated the results shown in this report refer only to the samples tested.

Member of the SGS Group (SGS SA)



Test Report

No. SZXEC1900530401 Date: 30 Mar 2019 Page 2 of 6

Test Results :

Test Part Description :

Table with 3 columns: Specimen No., SGS Sample ID, Description. Row 1: SN1, SZX19-005304.001, Green"PCB"

Remarks :

- (1) 1 mg/kg = 1 ppm = 0.0001%
(2) MDL = Method Detection Limit
(3) ND = Not Detected (< MDL)
(4) "-" = Not Regulated

RoHS Directive (EU) 2015/863 amending Annex II to Directive 2011/65/EU

Test Method : With reference to IEC 62321-4:2013+A1:2017, IEC 62321-5:2013, IEC 62321-7-2:2017, IEC 62321-6:2015 and IEC 62321-8:2017, analyzed by ICP-OES, UV-Vis and GC-MS.

Table with 5 columns: Test Item(s), Limit, Unit, MDL, QZT. Lists various heavy metals and brominated compounds with their respective limits and units.



Unless otherwise agreed in writing, this document is issued by the Company subject to its General Conditions of Service printed overleaf, available on request or accessible at http://www.sgs.com/terms-and-conditions.aspx and, for electronic format documents, subject to Terms and Conditions for Electronic Documents at http://www.sgs.com/terms-and-conditions/Electronic-Document.aspx. Attention is drawn to the limitation of liability, indemnification and jurisdiction issues defined therein. Any holder of this document is advised that unless he/she expressly agrees to the Company's liability at the time of its intended use, the limits of the Company's liability are restricted to the extent of the Company's liability under the applicable law. This document does not constitute an offer of any financial product or service of the Company. Any disclaimer, limitation, waiver or indemnification of the Company's liability or appearance of this document is unlawful and offenders may be prosecuted to the fullest extent of the law. Unless otherwise stated the results shown in this report refer only to the samples tested.

Member of the SGS Group (SGS SA)



## ZPMV2.E490354 - WIRING, PRINTED - COMPONENT

## Wiring, Printed - Component

See General Information for Wiring, Printed - Component

**O-LEADING SUPPLY CHAIN (HK) CO LTD**

E490354

ROOM 1205, 12/F  
TAI SANG BANK BLDG  
130-132 DES VOEUS ROAD  
CENTRAL, HONG KONG

| Type   | Cond Width    |               |                      | SS/<br>DS/<br>DSO | Max        | Max  |       | Meets<br>UL796 | C<br>T |       |
|--|---------------|---------------|----------------------|-------------------|------------|------|-------|----------------|--------|-------|
|  | Min           | Cond          | Area                 |                   | Solder     | Oper | Flame |                |        |       |
|  | mm(in)        | Edge<br>Thk   | Diam                 |                   | Limits     | Temp |       |                |        | Class |
| <b>Multilayer (mass laminate) printed wiring boards.</b> |               |               |                      |                   |            |      |       |                |        |       |
| <b>O-LEADING-401</b>                                     | 0.1 (0.004)   | 0.3 (0.012)   | 34 (1.34)            | DS                | 12.7 (0.5) | 260  | 10    | 130            | V-0    | -     |
| <b>O-LEADING-407</b>                                     | 0.08 (0.003)  | 0.2 (0.008)   | 17 (0.67)            | DS                | 9.7 (0.4)  | 260  | 10    | 130            | V-0    | All   |
| <b>Multilayer printed wiring boards.</b>                 |               |               |                      |                   |            |      |       |                |        |       |
| <b>O-LEADING-408</b>                                     | 0.125 (0.005) | 0.125 (0.005) | 12 (0.47)<br>Int:136 | DS                | 50.8 (2.0) | 280  | 20    | 130            | V-0    | All * |
| <b>Single layer printed wiring boards.</b>               |               |               |                      |                   |            |      |       |                |        |       |
| <b>O-LEADING-002</b>                                     | 0.38 (0.015)  | 1.14 (0.045)  | 34 (1.34)            | SS                | 19.1 (0.8) | 260  | 10    | 105            | V-0    | All - |
| <b>O-LEADING-003</b>                                     | 0.38 (0.015)  | 1.14 (0.045)  | 34 (1.34)            | SS                | 19.1 (0.8) | 260  | 10    | 130            | V-0    | ▲ -   |
| <b>O-LEADING-033</b>                                     | 0.15 (0.006)  | 0.3 (0.012)   | 34 (1.34)            | SS                | 25.4 (1.0) | 260  | 10    | 120            | V-0    | All - |
| <b>O-LEADING-205</b>                                     | 0.1 (0.004)   | 0.3 (0.012)   | 34 (1.34)            | DS                | 69.6 (2.7) | 260  | 10    | 130            | V-0    | All - |
| <b>O-LEADING-206</b>                                     | 0.15 (0.006)  | 0.33 (0.013)  | 17 (0.67)            | DS                | 69.6 (2.7) | 260  | 10    | 130            | V-0    | All - |
| <b>O-LEADING-D01</b>                                     | 0.14 (0.006)  | 0.15 (0.006)  | 33 (1.30)            | DS                | 25.4 (1.0) | 260  | 10    | 130            | V-0    | All * |
| <b>O-LEADING-S01</b>                                     | 0.25 (0.010)  | 0.25 (0.010)  | 17 (0.67)            | SS                | 25.4 (1.0) | 260  | 4     | 130            | V-0    | All * |

## WIRING, PRINTED - COMPONENT | UL Product iQ

|                      |              |              |           |    |            |     |   |     |     |       |
|----------------------|--------------|--------------|-----------|----|------------|-----|---|-----|-----|-------|
| <b>O-LEADING-S02</b> | 0.2 (0.008)  | 0.2 (0.008)  | 17 (0.67) | SS | 25.4 (1.0) | 260 | 4 | 130 | HB  | ▲ *   |
| <b>O-LEADING-S03</b> | 0.25 (0.010) | 0.25 (0.010) | 34 (1.34) | SS | 25.4 (1.0) | 260 | 4 | 130 | V-0 | All * |

\* - CTI marking is optional and may be marked on the printed wiring board.

Marking: Company name or file number and type designation. May be followed by a suffix to denote factory identification or burning test classification.

并不是所有出现在本数据库中的公司名称和产品都满足了UL跟踪检验服务的要求。只有带有UL标志的产品，才应该被视为经过UL认证，并满足UL跟踪检验服务的要求。注意查看产品上的标志。

UL允许在线认证目录中所含材料的复制遵循以下条件：1.指南信息、装配、构造、设计、系统和/或认证（文件）必须在不篡改任何数据（或图纸）的情况下完整且无误导性地呈现。2.经UL允许从在线认证目录转载“声明必须出现在所摘录材料的邻近位置。此外，转载材料必须包含以下格式的版权声明：“© 2019 UL LLC”

## Shipping service





| Quick Turn Lead Time |          |                     |
|----------------------|----------|---------------------|
| Layer Count:         | Lead Tim | Special Requirement |
| 1L/2L                | 2-3days  | 24 Hours,48 Hours   |
| 4L                   | 3-4days  | 48 Hours            |
| 6L                   | 4-5days  | 72 Hours            |
| 8L                   | 5-6days  | NA                  |
| 10L                  | 6-7days  | NA                  |
| 12L                  | 7-8days  | NA                  |
| 14L                  | 8-9days  | NA                  |

| Standard Lead Time |                  |                        |
|--------------------|------------------|------------------------|
| Layer Count:       | Sample Lead Time | Volume order lead time |
| 2L                 | 4 days           | 10 days                |
| 4L                 | 5 days           | 11 days                |
| 6L                 | 6 days           | 12 days                |
| 8L                 | 8 days           | 14 days                |
| 10L                | 10 days          | 16 days                |
| 12L                | 12 days          | 18 days                |
| 14L                | 14 days          | 20 days                |
| 16-32L             | 18 days          | 24 days                |

## Prozessfähigkeit

### PCB-Produktionsfunktionen

Layer Count: 1LAYER-32LAYER

Fertigkupferdicke: 1 / 3Oz-12Oz

Min Linienbreite / Abstand intern: 3.0mil / 3,0mil

Min Linie Breite / Abstand External: 4.0mil / 4.0mil

Max-Seitenverhältnis: 10: 1

Boarddicke: 0,2 mm-5,0 mm

Max-Panel-Größe (Zoll): 635 \* 1500mm

Minimum Bohrlochgröße: 4mil

Platt-Lochtoleranz: +/- 3mil

Blind / begrabene Vias (All-Typen): Ja

Via Fill (leitfähig, nicht leitend): Ja

Basismaterial: FR-4, FR-4HIGH TG.halogenfreies Material, Rogers, Aluminiumbasis,Polyimid,

Schweres Kupfer

Oberflächenoberflächen: HASL, OSP, Riesen-, Hal-LF, Linssion Silber,Linssion Zinn, Goldfinger,

Kohlenstofffarbe

## **SMT-Produktionsfunktionen**

PCB-Material: FR-4, CEM-1, CEM-3, Bord von Aluminiumbasis

MAX PCB Größe: 510x460mm

MIN Leiterplattengröße: 50x50mm

PCB-Dicke: 0,5 mm-4,5 mm

Boarddicke: 0,5-4 mm

MIN-Komponenten Größe: 0201

Standard-Chipgröße-Komponente: 0603 und größer

Component max Height: 15mm

Min-Lead-Pitch: 0,3 mm

Min BGA Ball Pitch: 0,4 mm

Platzierung Präzision: +/- 0,03 mm