

الرائدة O مرحبا بكم في

بما في ذلك تصميم ثنائي الفينيل متعدد الكلور وتصنيع ثنائي ، EMS لتكون شريك الحل الوحيد في سلسلة توريد O-Leading تسعى نحن نقدم بعضًا من أحدث تكنولوجيا ثنائي الفينيل متعدد الكلور ، بما (PCBA) الفينيل متعدد الكلور وتجميع ثنائي الفينيل متعدد الكلور يمكننا دعم من النموذج السريع بدوره إلى الإنتاج الضخم . Rigid-Flexible PCBs متعددة الطبقات و PCBs و HDI PCBs في ذلك والمتوسطة.

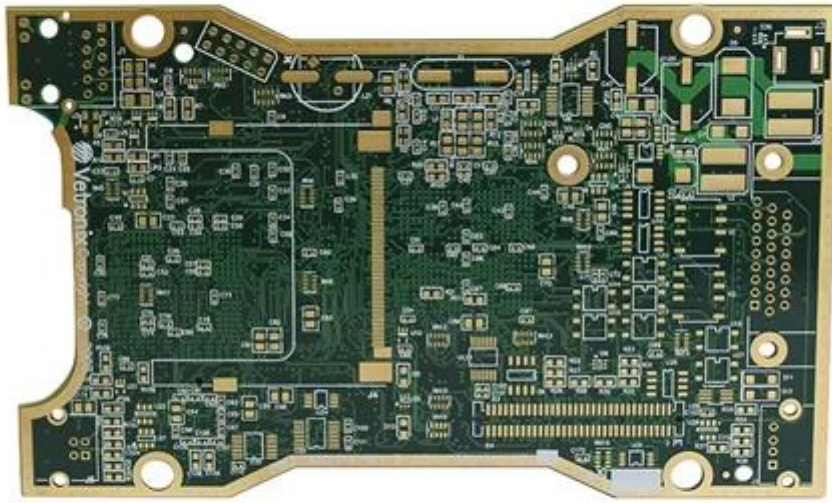
بشكل عام ، إن عملائنا العالميين متأثرون جدًا بخدماتنا: الاستجابة السريعة ، السعر التنافسي والالتزام بالجودة. توفير خدمة فنية أكثر قيمة والحل الشامل هو الطريق إلى الأمام.

الرائد على ابتكار وتطوير تكنولوجيا تصنيع الإلكترونيات كما هو الحال دائمًا ، وستبذل جهودًا متواصلة O-بالنظر إلى المستقبل ، ستركز ذات الشباك الواحد لتوفير خدمات من الدرجة الأولى وخلق المزيد من القيمة لعملائنا PCBA و PCB على خدمة

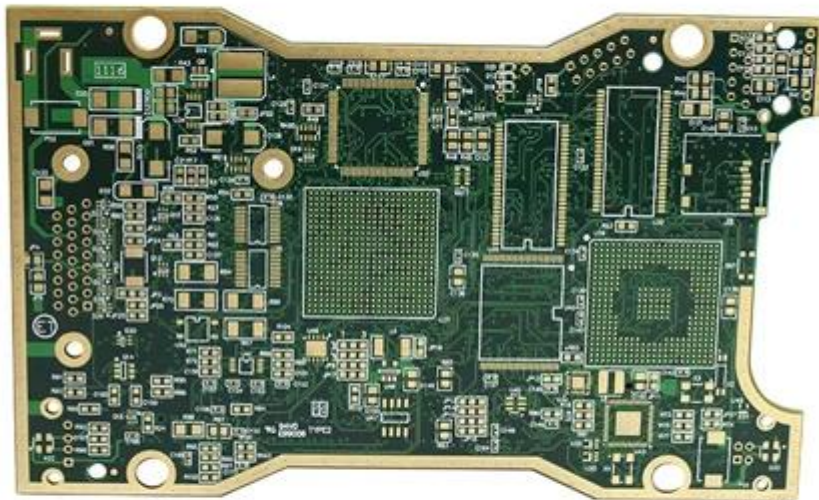
020. 025. PCS / bag 25
 25
 020. 025. PCS / bag 25

[pcb](#)

| | | | |
|---------------------|-----------------------|------------------|----------------|
| | (معدل الإنتاج السنوي) | معدل الإنتاج | O-معدل الإنتاج |
| معدل الإنتاج | FR-4 | معدل الإنتاج | 0.5OZ-5OZ |
| معدل الإنتاج | 0.2mm | معدل الإنتاج | 0.2mm |
| معدل الإنتاج | OSP / HASL | معدل الإنتاج | 0.1-5mm |
| معدل الإنتاج | ISO9001 UL SGS | Q / معدل الإنتاج | 10PCS-100PCS |
| معدل الإنتاج | 0.01 5- | معدل الإنتاج | 10 |
| معدل الإنتاج | pcba | معدل الإنتاج | 0.2mm |
| معدل الإنتاج | | معدل الإنتاج | \$ 0.1- \$ 10 |
| معدل الإنتاج design | | معدل الإنتاج | 0.01m3-10m3 |



www.o-leading.com



www.o-leading.com

فریقنا



Factory PCB



Automatic vacuum press machine



Drilling Machine



Pattern Plating Machine



Scrubbing Machine



Developing Machine



Routing Machine



High-speed flying probe machine



E-test Machine

Factory SMT



الشهادات

CICC INSPECTION CERTIFICATION



嘉泰认证

QUALITY MANAGEMENT SYSTEM CERTIFICATE
Certificate No: 18118Q10347R05

We hereby certify that
O-LEADING SUPPLY CHAIN(HK) CO.,LIMITED
Credit No: 61691591-000-07-18-7
Registration Add: FLAT/RM 1205 12/F TAI SANG BANK BUILDING 130-132 DES VODEUS ROAD CENTRAL HK
Business Add: 1213, Floor 13, Fortune Building, Danshui Town, Huiyang District, Huizhou, Guangdong, China

Has implemented and maintains a **Quality Management System** Which fulfills the requirements of the following standards
GB/T19001-2016 idt ISO9001:2015

Scope of certification
Sales of printed circuit boards

Initial issuance period: February 27, 2018
Renewal date: April 22, 2019
This certificate is valid during: April 22, 2019 – February 26, 2021
This certificate is invalid without CICC qualified label in the following period

| | | |
|-----------------------------|------------------------------|----------------|
| First supervision and audit | Second supervision and audit | Qualified mark |
|-----------------------------|------------------------------|----------------|

The certificate registration number does not include those production stages which fail to be covered by the relevant effective administrative procedures and qualification procedures stipulated by the state. The effectiveness of this certificate shall be restricted to those activities which are covered by the certificate. The actual situation of this certificate can be searched on the portal of CICC www.cicc.com.cn






CICC INSPECTION CERTIFICATION



嘉泰认证

质量管理体系认证证书
证书号: 18118Q10347R05

兹证明
诚领供应链(香港)有限公司
统一社会信用代码: 61691591-000-07-18-7
注册地址: 香港中環德輔道中130-132號大生銀行大廈1205室
经营地址: 广东惠州惠阳淡水南亨西路财富大厦13楼1313

建立的质量管理体系符合
GB/T19001-2016 idt ISO9001:2015 质量标准适用条款的要求

认证范围
印刷线路板的销售

初次获证日期: 2018年02月27日
换证日期: 2019年04月22日
证书有效期: 自2019年04月22日至2021年02月26日
在下列期限内, 未经CICC黏贴合格标贴, 本证书无效

| | | |
|-------|-------|-----|
| 第一次初审 | 第二次复审 | 黏贴处 |
|-------|-------|-----|

本证书认证范围不包括未取得有效的国家规定的行政许可、资质许可的产品/服务范围; 本证书通过CICC定期监督审核保持, 与年度《保持认证通知书》共同方为有效; 本证书信息可在国家认监委网站: www.cnca.gov.cn及CICC网站www.cicc.com.cn查询








Test Report

No. SZXEC1900530401 Date: 30 Mar 2019 Page 1 of 6

O-LEADING SUPPLY CHAIN (HK) CO., LIMITED

1313.FLOOR 13, FORTUNE BUILDING, DANSHUI TOWN, HUIYANG DISTRICT, HUIZHOU, GUANGDONG, CHINA

The following sample(s) was/were submitted and identified on behalf of the clients as : OSP

SGS Job No. : RP19-006089 - SZ
Date of Sample Received : 22 Mar 2019
Testing Period : 22 Mar 2019 - 30 Mar 2019
Test Requested : Selected test(s) as requested by client.
Test Method : Please refer to next page(s).
Test Results : Please refer to next page(s).

Conclusion : Based on the performed tests on submitted sample(s), the results of Lead, Mercury, Cadmium, Hexavalent chromium, Polybrominated biphenyls (PBBs), Polybrominated diphenyl ethers (PBDEs) and Phthalates such as Bis(2-ethylhexyl) phthalate (DEHP), Butyl benzyl phthalate (BBP), Dibutyl phthalate (DBP), and Diisobutyl phthalate (DIBP) comply with the limits as set by RoHS Directive (EU) 2015/863 amending Annex II to Directive 2011/65/EU.

Signed for and on behalf of
SGS-CSTC Standards Technical Services Co., Ltd. Shenzhen Branch

Tina
Tina Fan
Approved Signatory



Unless otherwise agreed in writing, this document is issued by the Company subject to its General Conditions of Service printed overleaf, available on request or accessible at http://www.sgs.com/terms-and-conditions.aspx and, for electronic format documents, subject to Terms and Conditions for Electronic Documents at http://www.sgs.com/terms-and-conditions/ElectronicDocuments.aspx. Attention is drawn to the limitation of liability, indemnification and jurisdiction issues defined therein. Any holder of this document is advised that unless they have expressly agreed to the Company's liability at the time of its intended use, the limits of the Company's liability are restricted to the extent of the Company's liability under the applicable law. This document does not constitute an offer of insurance or any other financial product. The Company's liability is limited to the extent of the Company's liability under the applicable law. The Company's liability is limited to the extent of the Company's liability under the applicable law. The Company's liability is limited to the extent of the Company's liability under the applicable law.

Member of the SGS Group (SGS SA)



Test Report

No. SZXEC1900530401 Date: 30 Mar 2019 Page 2 of 6

Test Results :

Test Part Description :

Table with 3 columns: Specimen No., SGS Sample ID, Description. Row 1: SN1, SZX19-005304.001, Green"PCB"

Remarks :

- (1) 1 mg/kg = 1 ppm = 0.0001%
(2) MDL = Method Detection Limit
(3) ND = Not Detected (< MDL)
(4) "-" = Not Regulated

RoHS Directive (EU) 2015/863 amending Annex II to Directive 2011/65/EU

Test Method : With reference to IEC 62321-4:2013+A1:2017, IEC 62321-5:2013, IEC 62321-7-2:2017, IEC 62321-6:2015 and IEC 62321-8:2017, analyzed by ICP-OES, UV-Vis and GC-MS.

Table with 5 columns: Test Item(s), Limit, Unit, MDL, QZT. Lists various substances like Cadmium, Lead, Mercury, Hexavalent Chromium, Sum of PBBs, etc. with their respective limits and units.



Unless otherwise agreed in writing, this document is issued by the Company subject to its General Conditions of Service printed overleaf, available on request or accessible at http://www.sgs.com/terms-and-conditions.aspx and, for electronic format documents, subject to Terms and Conditions for Electronic Documents at http://www.sgs.com/terms-and-conditions/ElectronicDocuments.aspx. Attention is drawn to the limitation of liability, indemnification and jurisdiction issues defined therein. Any holder of this document is advised that unless they have expressly agreed to the Company's liability at the time of its intended use, the limits of the Company's liability are restricted to the extent of the Company's liability under the applicable law. This document does not constitute an offer of insurance or any other financial product. The Company's liability is limited to the extent of the Company's liability under the applicable law. The Company's liability is limited to the extent of the Company's liability under the applicable law. The Company's liability is limited to the extent of the Company's liability under the applicable law.

Member of the SGS Group (SGS SA)



ZPMV2.E490354 - WIRING, PRINTED - COMPONENT

Wiring, Printed - Component

See General Information for Wiring, Printed - Component

O-LEADING SUPPLY CHAIN (HK) CO LTD
 ROOM 1205, 12/F
 TAI SANG BANK BLDG
 130-132 DES VOEUS ROAD
 CENTRAL, HONG KONG

E490354

| Type | Cond Width | | Cond Thk | SS/ DS/ DSO | Max | Max | | Meets | C | | |
|--|---------------|---------------|----------------------|-------------|------------|--------|------|-------|-------|-------|---|
| | Min | Edge | | | Area | Solder | Oper | | | Flame | |
| | mm(in) | mm(in) | mic(mil) | | Diam | Limits | Temp | Class | UL796 | T | |
| Multilayer (mass laminate) printed wiring boards. | | | | | | | | | | | |
| O-LEADING-401 | 0.1 (0.004) | 0.3 (0.012) | 34 (1.34) | DS | 12.7 (0.5) | 260 | 10 | 130 | V-0 | - | |
| O-LEADING-407 | 0.08 (0.003) | 0.2 (0.008) | 17 (0.67) | DS | 9.7 (0.4) | 260 | 10 | 130 | V-0 | All | |
| Multilayer printed wiring boards. | | | | | | | | | | | |
| O-LEADING-408 | 0.125 (0.005) | 0.125 (0.005) | 12 (0.47) Int:136 | DS | 50.8 (2.0) | 280 | 20 | 130 | V-0 | All | * |
| Single layer printed wiring boards. | | | | | | | | | | | |
| O-LEADING-002 | 0.38 (0.015) | 1.14 (0.045) | 34 (1.34) | SS | 19.1 (0.8) | 260 | 10 | 105 | V-0 | All | - |
| O-LEADING-003 | 0.38 (0.015) | 1.14 (0.045) | 34 (1.34) | SS | 19.1 (0.8) | 260 | 10 | 130 | V-0 | ▲ | - |
| O-LEADING-033 | 0.15 (0.006) | 0.3 (0.012) | 34 (1.34) | SS | 25.4 (1.0) | 260 | 10 | 120 | V-0 | All | - |
| O-LEADING-205 | 0.1 (0.004) | 0.3 (0.012) | 34 (1.34) | DS | 69.6 (2.7) | 260 | 10 | 130 | V-0 | All | - |
| O-LEADING-206 | 0.15 (0.006) | 0.33 (0.013) | 17 (0.67) | DS | 69.6 (2.7) | 260 | 10 | 130 | V-0 | All | - |
| O-LEADING-D01 | 0.14 (0.006) | 0.15 (0.006) | 33 (1.30) | DS | 25.4 (1.0) | 260 | 10 | 130 | V-0 | All | * |
| O-LEADING-S01 | 0.25 (0.010) | 0.25 (0.010) | 17 (0.67) | SS | 25.4 (1.0) | 260 | 4 | 130 | V-0 | All | * |

WIRING, PRINTED - COMPONENT | UL Product iQ

| | | | | | | | | | | | |
|----------------------|--------------|--------------|-----------|----|------------|-----|---|-----|-----|-----|---|
| O-LEADING-S02 | 0.2 (0.008) | 0.2 (0.008) | 17 (0.67) | SS | 25.4 (1.0) | 260 | 4 | 130 | HB | ▲ | * |
| O-LEADING-S03 | 0.25 (0.010) | 0.25 (0.010) | 34 (1.34) | SS | 25.4 (1.0) | 260 | 4 | 130 | V-0 | All | * |

* - CTI marking is optional and may be marked on the printed wiring board.

Marking: Company name or file number and type designation. May be followed by a suffix to denote factory identification or burning test classification.

并不是所有出现在本数据库中的公司名称和产品都满足了UL跟踪检验服务的要求。只有带有UL标志的产品，才应该被视为经过UL认证，并满足UL跟踪检验服务的要求。注意查看产品上的标志。

UL 允许在线认证目录中所含材料的复制遵循以下条件：1.指南信息、装配、构造、设计、系统和/或认证（文件）必须在不篡改任何数据（或图纸）的情况下完整且无误导性地呈现。2.经 UL 允许从在线认证目录转载“声明必须出现在所摘录材料的邻近位置。此外，转载材料必须包含以下格式的版权声明：“© 2019 UL LLC”

التغليف والشحن

Shipping service



DHL
WORLDWIDE EXPRESS®

TNT

FedEx
Express®



| Quick Turn Lead Time | | |
|----------------------|----------|---------------------|
| Layer Count: | Lead Tim | Special Requirement |
| 1L/2L | 2-3days | 24 Hours,48 Hours |
| 4L | 3-4days | 48 Hours |
| 6L | 4-5days | 72 Hours |
| 8L | 5-6days | NA |
| 10L | 6-7days | NA |
| 12L | 7-8days | NA |
| 14L | 8-9days | NA |

| Standard Lead Time | | |
|--------------------|------------------|------------------------|
| Layer Count: | Sample Lead Time | Volume order lead time |
| 2L | 4 days | 10 days |
| 4L | 5 days | 11 days |
| 6L | 6 days | 12 days |
| 8L | 8 days | 14 days |
| 10L | 10 days | 16 days |
| 12L | 12 days | 18 days |
| 14L | 14 days | 20 days |
| 16-32L | 18 days | 24 days |

القدرة العملية

قدرات إنتاج ثنائي الفينيل متعدد الكلور

1 Layer-32Layer عدد الطبقات:

oz-12oz الانتهاء من سماكة النحاس 1 / 3

3.0mil / 3.0mil دقيقة خط العرض / تباعد الداخلية 3.0

4.0mil / 4.0mil دقيقة خط العرض / تباعد خارجي: 4.0

نسبة العرض إلى الارتفاع القصوى: 10: 1

سمك المجلس 0.2 مم-5.0 مم

الحد الأقصى لحجم اللوحة (بوصة): 635 * 1500 مم

4mil الحد الأدنى لحفر حفرة الحجم:

3mil مثقوب حفرة التسامح: +/-

Blind / نعم / (أنواع أخي): نعم /

عبر التعبئة (موصل ، غير موصل): نعم

قاعدة ألومنيوم،النسبة الثابتة ،Rogers, Halogen free material, FR-4, FR-4high Tg.المواد الأساسية

النحاس الثقيل

تين ، أصابع الذهب ، حبر الكربون Immersion,Immersion الفضة ، HAL-LF ، ENIG ، OSP ، HASL :التشطيبات السطحية

قدرات الإنتاج SMT

لوحة الألومنيوم ، CEM-3 ، CEM-1 ، FR-4 :مادة الكلور
460mmxأقصى حجم ثنائي الفينيل متعدد الكلور: 510
50mmx50ممين حجم الكلور □
mm-4.5سمك □ PCB 0.5
mm □ المجلس 4-0.5
الحد الأدنى لحجم المكونات: 0201
مكون حجم رقاقة القياسية: 0603 وأكبر
مكون أقصى ارتفاع □ 15 ملم
دقيقة الملعب الرصاص: 0.3 مم
دقيقة الملعب الكرة بغا: 0.4 ملليمتر
mmدقة التنسيب: +/- 0.03