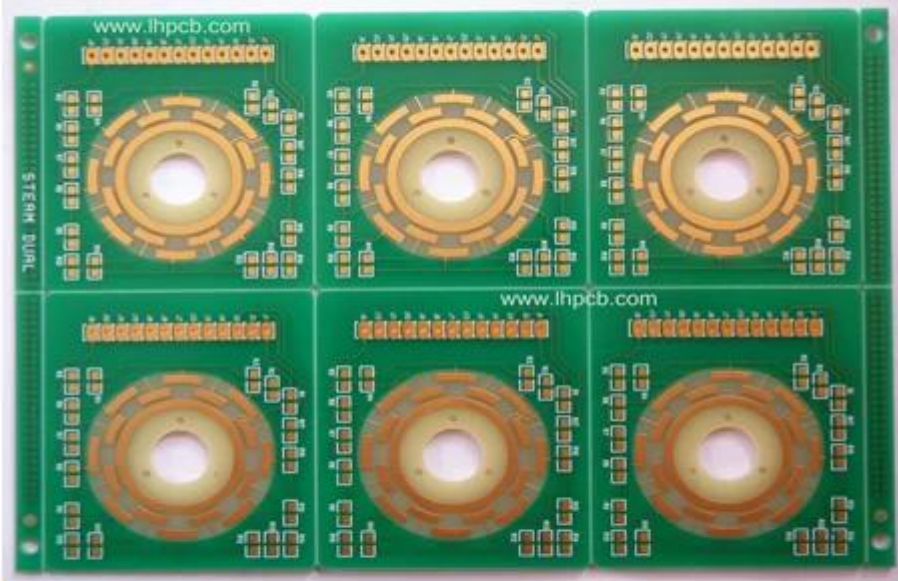


Lyr	Image	Foil	Name
COMP		0.5oz	Foil 1/2oz
			R-5670(G) 3313 RC54%
L2		0.5oz	
L3		0.5oz	R-5775(G) 0.150mm H/H 37"*49"(1080*2)(RTF)
			R-5670(G) 1078 RC68%
			R-5670(G) 1035 RC70%
L4		0.5oz	
L5		0.5oz	R-5775(G) 0.150mm H/H 37"*49"(1080*2)(RTF)
			R-5670(G) 1078 RC68%
			R-5670(G) 1035 RC70%
L6		0.5oz	
L7		0.5oz	R-5775(G) 0.150mm H/H 37"*49"(1080*2)(RTF)
			R-5670(G) 1078 RC68%
			R-5670(G) 1035 RC70%
L8		0.5oz	
L9		2oz	R-5775(G) 0.140mm H/2 37"*49"(1078*2)(RTF)
			R-5670(G) 2116 RC54%
			R-5670(G) 2116 RC54%
			R-5670(G) 2116 RC54%
L10		2oz	
L11		0.5oz	R-5775(G) 0.140mm H/2 37"*49"(1078*2)(RTF)
			R-5670(G) 1035 RC70%
			R-5670(G) 1078 RC68%
L12		0.5oz	
L13		0.5oz	R-5775(G) 0.150mm H/H 37"*49"(1080*2)(RTF)
			R-5670(G) 1035 RC70%
			R-5670(G) 1078 RC68%
L14		0.5oz	
L15		0.5oz	R-5775(G) 0.150mm H/H 37"*49"(1080*2)(RTF)
			R-5670(G) 1035 RC70%
			R-5670(G) 1078 RC68%
L16		0.5oz	
L17		0.5oz	R-5775(G) 0.150mm H/H 37"*49"(1080*2)(RTF)
			R-5670(G) 3313 RC54%
SOLD		0.5oz	Foil 1/2oz

O-LEADING
To Be Reliable, To Be Valuable



www.o-leading.com

O-LEADING
To Be Reliable, To Be Valuable



www.o-leading.com



www.o-leading.com

[HDI pcb](#)

000000







CICC INSPECTION CERTIFICATION



QUALITY MANAGEMENT SYSTEM CERTIFICATE

Certificate No: 16118Q10347R05

We hereby certify that

O-LEADING SUPPLY CHAIN(HK) CO.,LIMITED

Credit No: 61691591-000-07-17-2

Registration Add: ROOM 603D 6/F HANG PONT COMMERCIAL BUILDING,31 TONKIN ST,CHEUNG SHA WAN,KL, HK

Business Add: 1313 Floor 13 Fortune Building, Danshui Town Huiyang District, Huizhou, Guangdong, China

Has implemented and maintains a **Quality Management System** Which fulfills the requirements of the following standards
GB/T19001-2016 idt ISO9001:2015

Scope of certification
Sales of printed circuit boards

Initial Issuance period: February 27, 2018
This certificate is valid during: February 27, 2018 -- February 26, 2021
This certificate is invalid without CICC qualified label in the following period

First supervision and audit	Qualified mark	Second supervision and audit	Qualified mark
-----------------------------	----------------	------------------------------	----------------

The certification registration scope shall include those production services scope which fall to be covered by the relevant effective administrative permission and qualification permission required by the state. The effectiveness of this certificate shall be evaluated by annual surveillance audit of CICC. The certificate shall be valid when used together with the surveillance audit conclusion. The related information of this certification can be searched at the public website of company www.cicc.com.cn.






201726 201VZL430354 - Wiring, Printed - Component

UL ONLINE CERTIFICATIONS DIRECTORY

ZPMV2.E490354
Wiring, Printed - Component

For enhanced search functionality, please visit [UL's Global Databases](#).
Click on a product designation for complete information.

[Page Bottom](#)

Wiring, Printed - Component

See General Information for Wiring, Printed - Components

O-LEADING SUPPLY CHAIN CO LIMITED 4190354
Fortune Building, Nanheng West Road
Room 1313
Huizhou, Guangdong 516211, CHINA

	Cond Width			SS/ DS/	Area Diam	Solder		Diper		Flame	RoHS	C
	Min	Max	Min			Max	Temp	Class				
Typ	max(in)	mm(in)	mic(mil)	DSO	mm(in)	C	sec	C	Class	DSR	I	
Multi-layer (mass laminate) printed wiring boards.												
O-LEADING-401												
	0.2 (0.004)	0.3 (0.012)	34 (1.34)	D6	12.7 (0.5)	260	10	130	V-0	-	-	
O-LEADING-407												
	0.08 (0.003)	0.2 (0.008)	17 (0.67)	D5	9.2 (0.4)	260	10	170	V-0	NI	-	
Multi-layer printed wiring boards.												
O-LEADING-408												
	0.125 (0.005)	0.125 (0.005)	12 (0.47) 31:1.25	D6	50.8 (2.0)	260	20	130	V-0	NI	*	
Single layer printed wiring boards.												
O-LEADING-002												
	0.76 (0.03)	1.14 (0.045)	34 (1.34)	D5	19.1 (0.7)	260	10	105	V-0	NI	-	
O-LEADING-003												
	0.38 (0.015)	1.14 (0.045)	34 (1.34)	D5	19.1 (0.7)	260	10	130	V-0	▲	-	
O-LEADING-033												
	0.15 (0.006)	0.3 (0.012)	34 (1.34)	D5	25.4 (1.0)	260	10	120	V-0	NI	-	
O-LEADING-205												
	0.1 (0.004)	0.3 (0.012)	34 (1.34)	D6	69.6 (2.7)	260	10	130	V-0	NI	-	
O-LEADING-206												
	0.15 (0.006)	0.33 (0.013)	17 (0.67)	D5	69.6 (2.7)	260	10	130	V-0	NI	-	

* - CTI marking is optional and may be marked on the printed wiring board.

Marking: Company name or file number and type designation. May be followed by a suffix to denote factory identification or burning test classification.
Last updated on 2017-01-27

Questions? [Print this page](#) [Terms of Use](#) [Page Top](#)

http://www.ul.com/portal/en/sectors/wiring/Printed-Component/ZPMV2.E490354/Wiring,Printed-Component/10

SGS

Test Report No. CAVEC1805164701 Date: 03 Apr 2018 Page 2 of 8

Test Results:

Test Part Description:

Specimen No. **SGS Sample ID** **Description**
SN1 CAN18-051647.001 Green PCB*

Remarks:

(1) 1 mg/kg = 1 ppm = 0.0001%
(2) MDL = Method Detection Limit
(3) ND = Not Detected (< MDL)
(4) * = Not Regulated

RoHS Directive (EU) 2015/863 amending Annex II to Directive 2011/65/EU

Test Method: With reference to IEC 62321-4:2014+A1:2017, IEC62321-5:2013, IEC62321-7-2:2017, IEC 62321-6:2015 and IEC62321-8:2017, analyzed by ICP-OES, UV-Vis and GC-MS.

Test Item(s)	Limit	Unit	MDL	Det
Cadmium (Cd)	100	mg/kg	2	ND
Lead (Pb)	1,000	mg/kg	2	9
Mercury (Hg)	1,000	mg/kg	2	ND
Hexavalent Chromium (CrVI)	1,000	mg/kg	8	ND
Sum of PBBs	1,000	mg/kg	-	ND
Monobromobiphenyl	-	mg/kg	5	ND
Dibromobiphenyl	-	mg/kg	5	ND
Tribromobiphenyl	-	mg/kg	5	ND
Tetrabromobiphenyl	-	mg/kg	5	ND
Pentabromobiphenyl	-	mg/kg	5	ND
Hexabromobiphenyl	-	mg/kg	5	ND
Heptabromobiphenyl	-	mg/kg	5	ND
Octabromobiphenyl	-	mg/kg	5	ND
Nonabromobiphenyl	-	mg/kg	5	ND
Decabromobiphenyl	-	mg/kg	5	ND
Sum of PBDEs	1,000	mg/kg	-	ND
Monobromodiphenyl ether	-	mg/kg	5	ND
Dibromodiphenyl ether	-	mg/kg	5	ND
Tribromodiphenyl ether	-	mg/kg	5	ND
Tetrabromodiphenyl ether	-	mg/kg	5	ND
Pentabromodiphenyl ether	-	mg/kg	5	ND

Member of the SGS Group (SGL SA)

3. what 材料 種類 種類 o- 種類 種類

FR4 種類 種類 TG 種類 種類 種類 種類 種類 種類 Arlon 種類 Telfon 種類 種類 種類 種類 / 種類 種類 種類 PI 種類.

4. 種類 種類 種類 種類 種類 種類 種類 種類 種類 種類 種類 種類 種類 種類 種類 種類

種類 種類 種類 種類 種類 Gerber 274-X. 種類 種類 種類 種類 種類 種類 種類 Cam350 種類 CAD 種類 Protel 99se 種類 PADS 種類 DXP 種類 Eagle.

5. 種類 種類 種類 種類 種類 種類 種類 種類 種類 種類 種類 種類 種類 種類 種類 種類

種類 種類 ← 種類 種類 種類 ← 種類 種類 種類 ← AOI 種類 種類 種類 種類 ← 種類 種類 種類 ← 種類 種類 種類 ← 種類 種類 ← 種類 種類 ← PTH ← ← 種類 種類 ← 種類 種類 ← 種類 種類 ← 種類 種類 種類 ← 種類 種類 種類 ← 種類 種類 種類 ← 種類 種類 種類 ← 種類 種類 種類 ← 種類 種類 種類 ← E / T ← 種類 種類 種類.